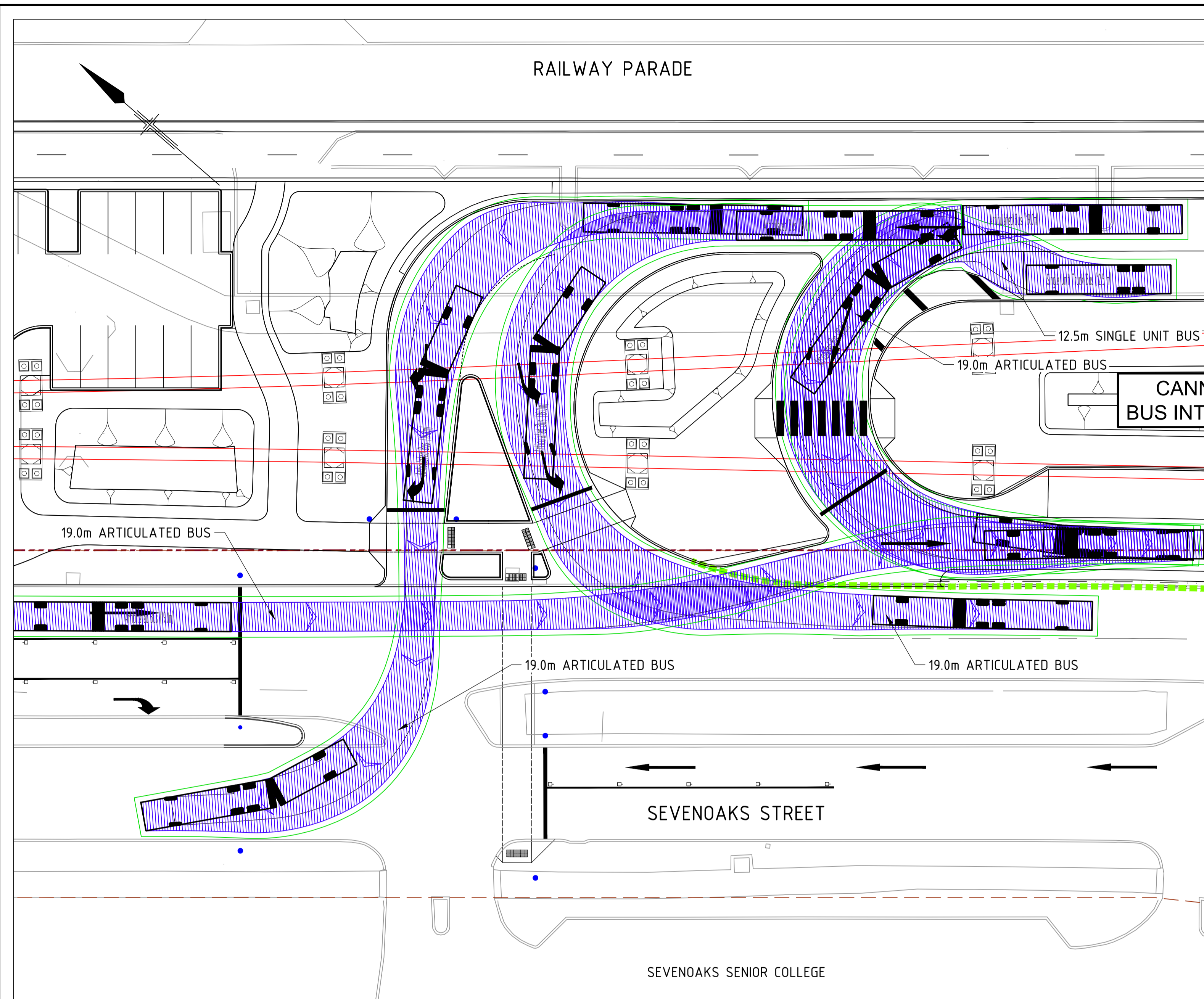
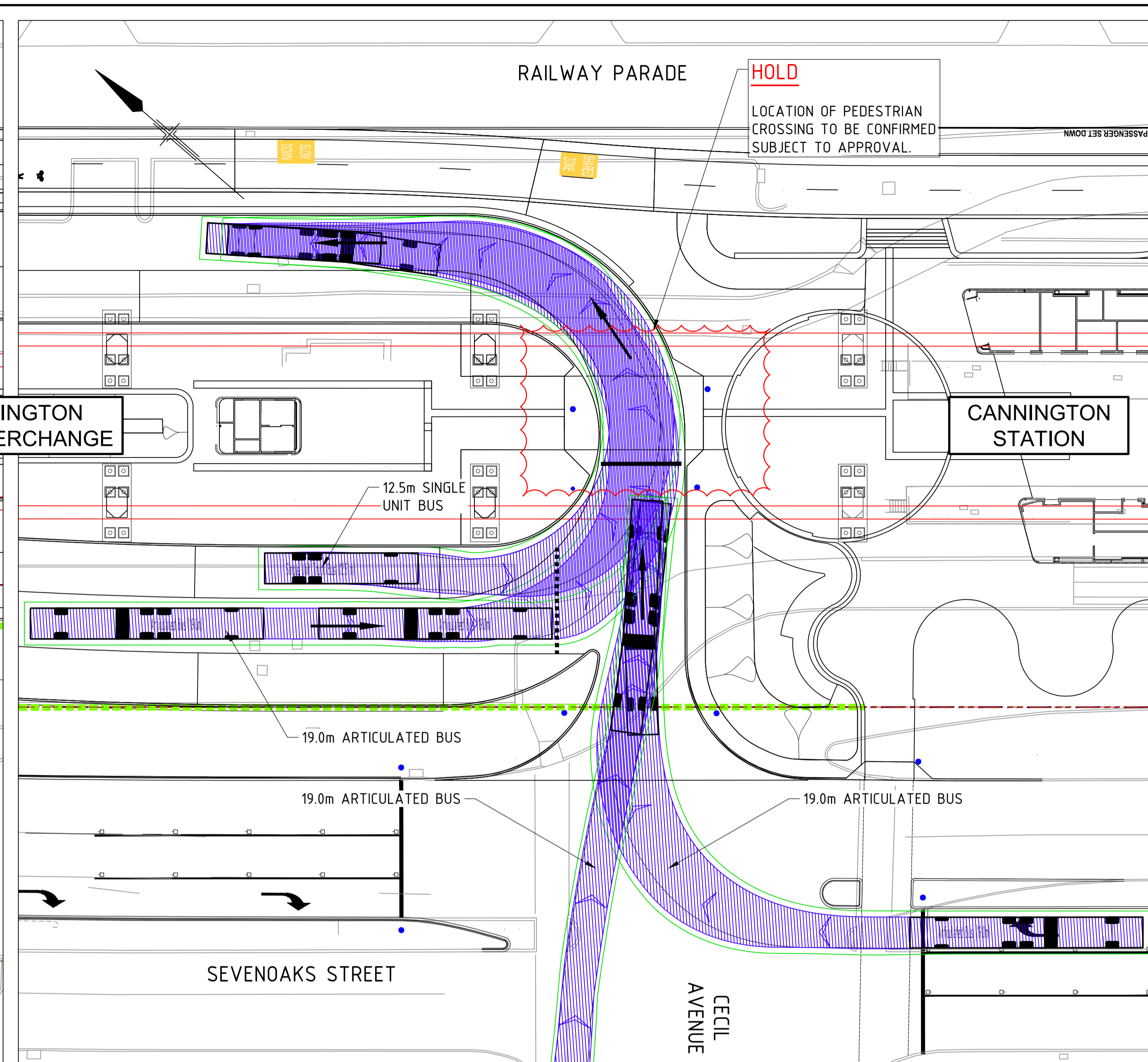


# Appendix O – Bus Interchange and Car Park Swept Path Diagrams prepared by ALUA



EXIT AND NORTHERN "DOG BONE" MOVEMENTS



ENTRY AND SOUTHERN "DOG BONE" MOVEMENTS

Articulated Bus (19.0m)	
Vehicle Clearance	0.500m
Overall Length	19.000m
Overall Width	2.500m
Overall Body Height	2.823m
Min Body Ground Clearance	0.410m
Track Width	2.500m
Lock-to-lock time	6.00s
Curb to Curb Turning Radius	15.000m
Outer Wheel Minimum Radius	16.000m

Single Unit Truck/Bus (12.5 m)	
Vehicle Clearance	0.500m
Overall Length	12.500m
Overall Width	2.500m
Overall Body Height	4.300m
Min Body Ground Clearance	0.490m
Track Width	2.500m
Lock-to-lock time	6.00s
Curb to Curb Turning Radius	12.500m
Outer Wheel Minimum Radius	15.000m



**ISSUED FOR INFORMATION**

A1.07	28.06.23	ISSUED FOR DEVELOPMENT APPLICATION APPROVAL	ML	PS	BS	CS
REV	DATE	AMENDMENT	DSN	DRN	CHK	APP
A1						

0 10 20 30 40 50 100mm  
AT ORIGINAL PLOT SIZE

This document must not be copied without PTA's written permission, and the contents thereof must not be imparted to a third party nor be used for any unauthorised purpose.

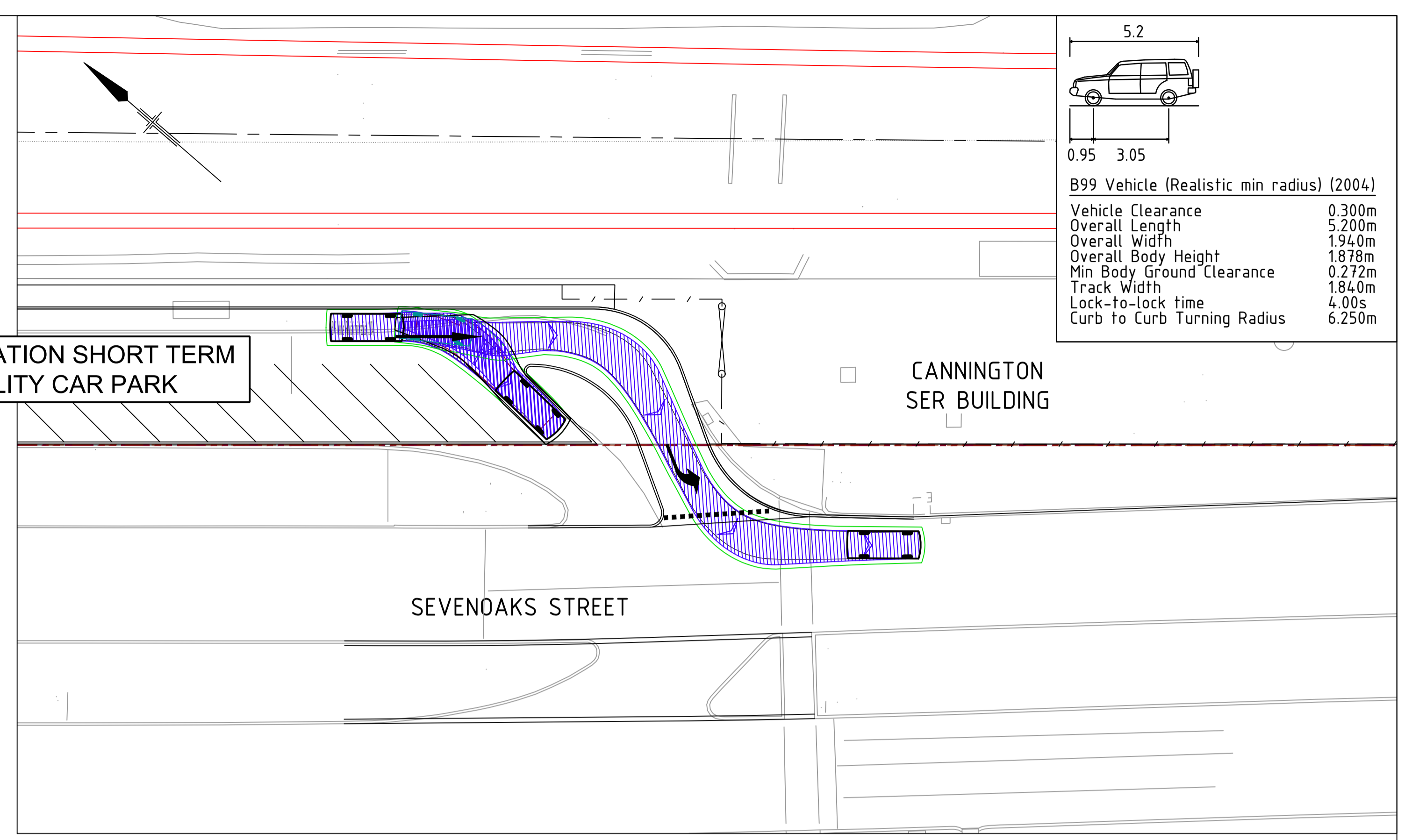
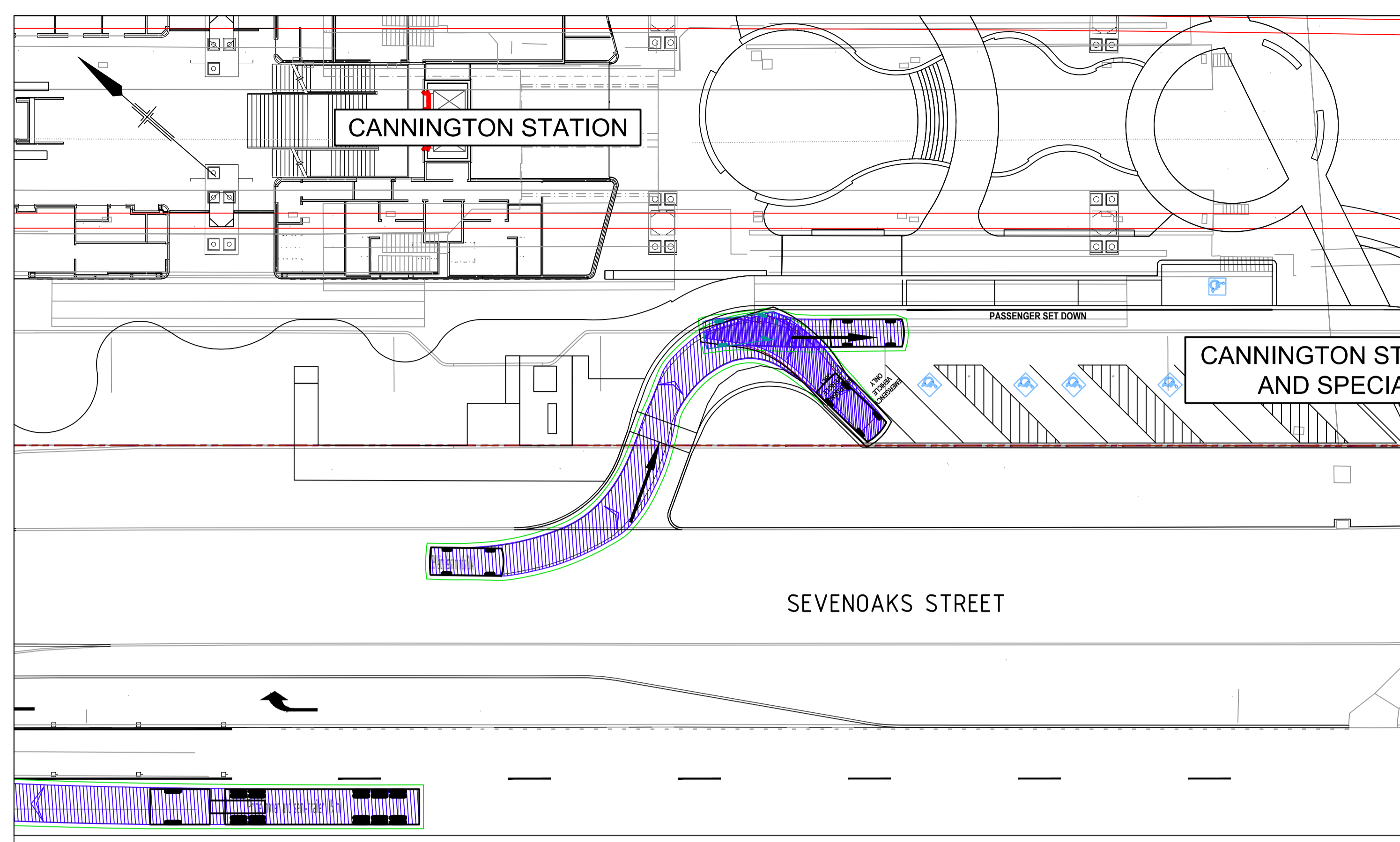
ARMADALE LINE UPGRADE ALLIANCE  
Innovation to Reality

Contractor No: LXR-P2-Z3-CN-CI-CR-SKT-00001

REFERENCES	SCALE	DESIGNED
	1:250 (@A1)	M.LEAN
	DATUM	DRAWN
	HORIZONTAL: PCG20	P.SPAGNOLO
	VERTICAL: AHD71	CHECKED
		B.SASHEGYI
		APPROVED
		C.STEPHENS
		DATE
		28.06.23

VICTORIA PARK TO CANNING LEVEL CROSSING REMOVAL	
CANNINGTON BUS INTERCHANGE	
CIVIL CORRIDOR - PACKAGE 2	
SWEEP PATH ANALYSIS	
PTA Drawing No: LXR-P2-Z3-CN-CI-CR-SKT-00001	Rev: A1.07

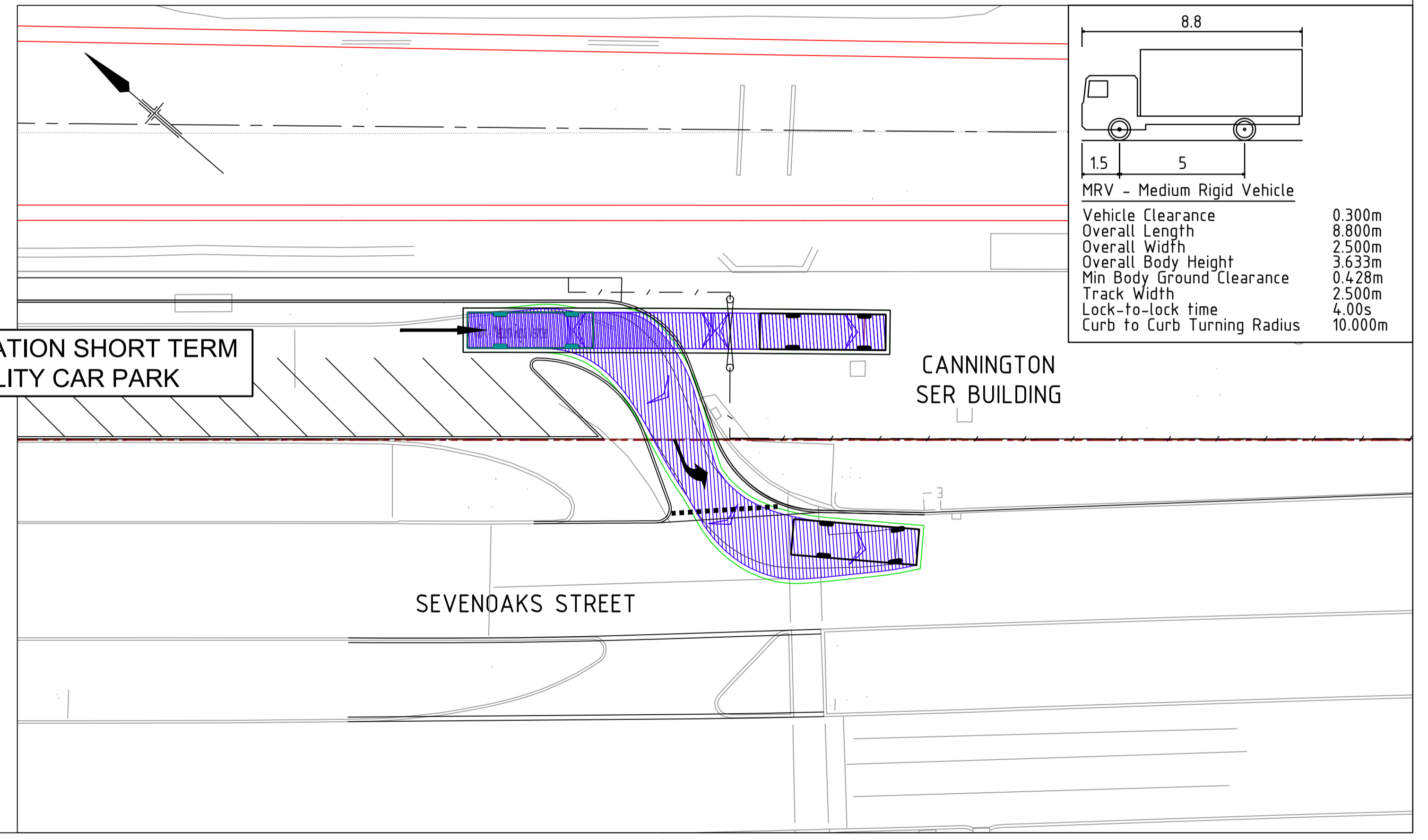
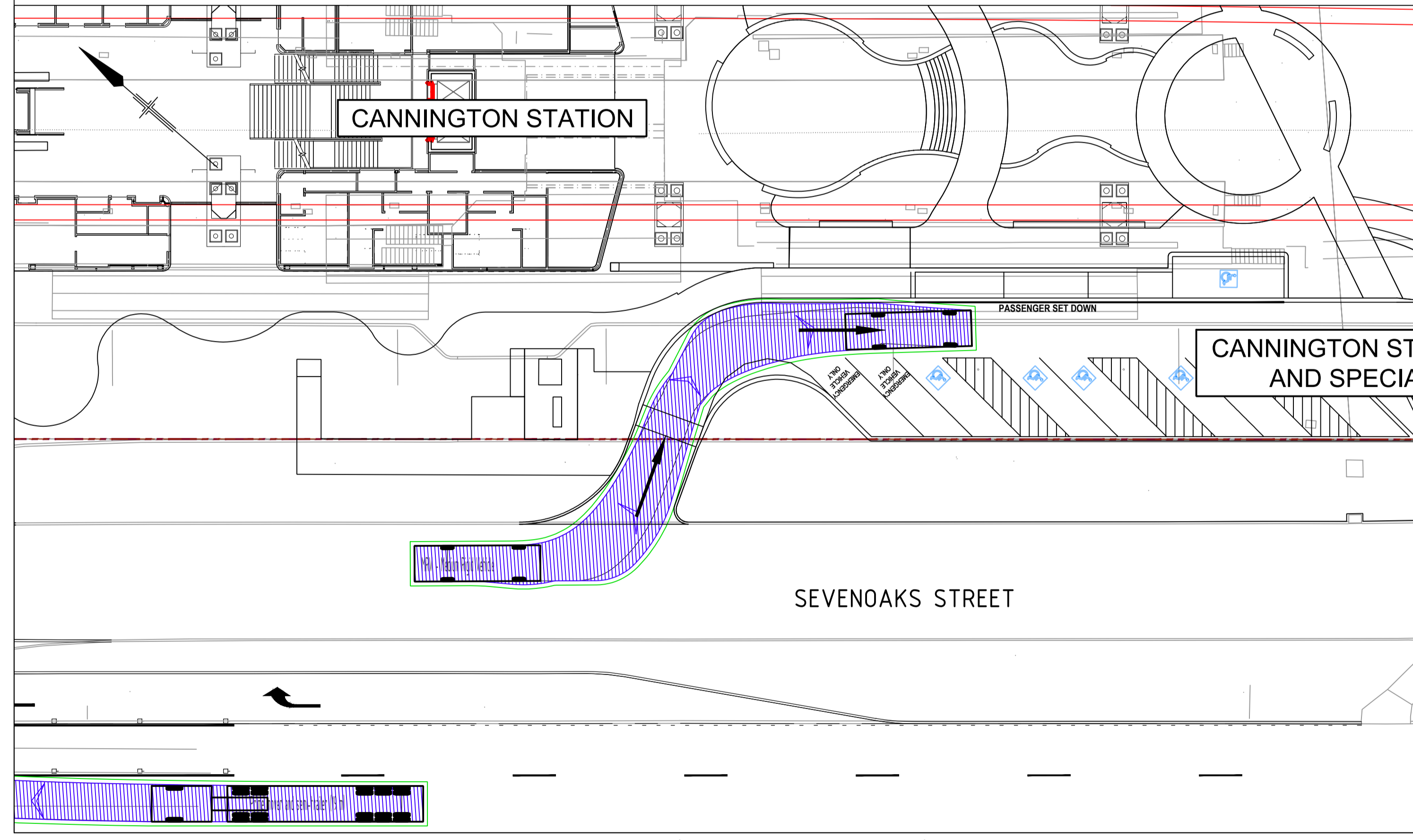




5.2	
0.95	3.05
B99 Vehicle (Realistic min radius) (2004)	
Vehicle Clearance	0.300m
Overall Length	5.200m
Overall Width	1.940m
Overall Body Height	1.878m
Min Body Ground Clearance	0.272m
Track Width	1.840m
Lock-to-lock time	4.00s
Curb to Curb Turning Radius	6.250m

ENTRY - B99 VEHICLE

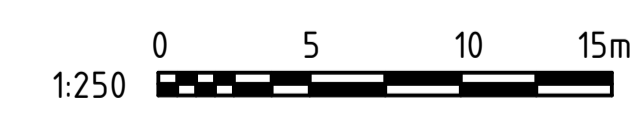
EXIT - B99 VEHICLE



8.8	
1.5	5
MRV - Medium Rigid Vehicle	
Vehicle Clearance	0.300m
Overall Length	8.800m
Overall Width	2.500m
Overall Body Height	3.633m
Min Body Ground Clearance	0.428m
Track Width	2.500m
Lock-to-lock time	4.00s
Curb to Curb Turning Radius	10.000m

ENTRY - MRV (MEDIUM RIGID VEHICLE)

EXIT - MRV (MEDIUM RIGID VEHICLE)



**ISSUED FOR INFORMATION**

A1.06	28.06.23	ISSUED FOR DEVELOPMENT APPLICATION APPROVAL	ML	P.S	B.S	C.S
REV	DATE	AMENDMENT	DSN	DRN	CHK	APP
A1						

ORIG SIZE 0 10 20 30 40 50 100mm  
AT ORIGINAL PLOT SIZE

This document must not be copied without PTA's written permission, and the contents thereof must not be imparted to a third party nor be used for any unauthorised purpose.

ARMADALE LINE UPGRADE ALLIANCE  
Innovation to Reality

Contractor No: LXR-P2-Z3-CN-CI-CR-SKT-00002

REFERENCES	SCALE 1:250 (@A1)	DESIGNED M.LEAN
	DATUM HORIZONTAL: PCG20 VERTICAL: AHD71	DRAWN P.SPAGNOLO
		CHECKED B.SASHEGYI
		APPROVED C.STEPHENS
		DATE 28.06.23

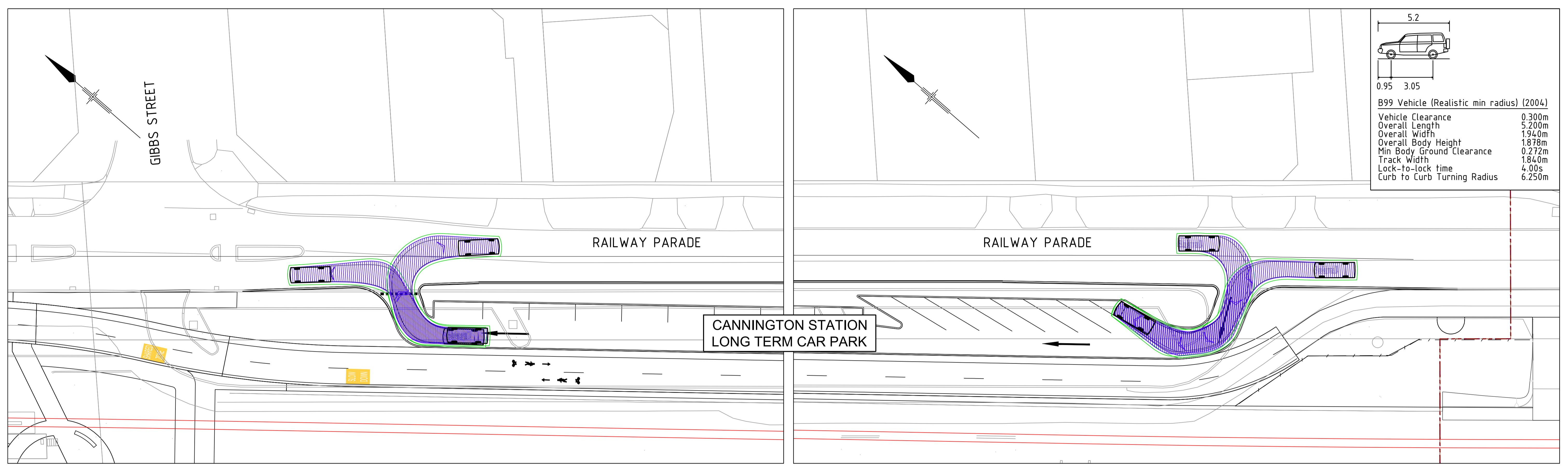
Government of Western Australia  
Public Transport Authority

VICTORIA PARK TO CANNING  
LEVEL CROSSING REMOVAL

**CANNINGTON STATION - SOUTH-WEST CAR PARK**  
CIVIL CORRIDOR - PACKAGE 2  
SWEEP PATH ANALYSIS

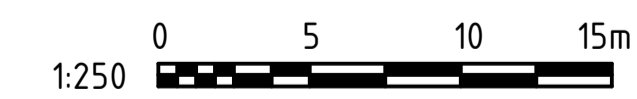
PTA Drawing No: LXR-P2-Z3-CN-CI-CR-SKT-00002 Rev: A1.06





EXIT - B99 VEHICLE

ENTRY - B99 VEHICLE



**ISSUED FOR INFORMATION**

A106	28.06.23	ISSUED FOR DEVELOPMENT APPLICATION APPROVAL	ML	P.S	B.S	C.S
REV	DATE	AMENDMENT	DSN	DRN	CHK	APP
A1						

ORIG SIZE: 0 10 20 30 40 50 100mm  
AT ORIGINAL PLOT SIZE

This document must not be copied without PTA's written permission, and the contents thereof must not be imparted to a third party nor be used for any unauthorised purpose.

**ARMADALE LINE UPGRADE ALLIANCE**  
*Innovation to Reality*

Contractor No: LXR-P2-Z3-CN-CI-CR-SKT-00003

REFERENCES	SCALE
	1:250 (@A1)
DATUM	HORIZONTAL: PCG20 VERTICAL: AHD71

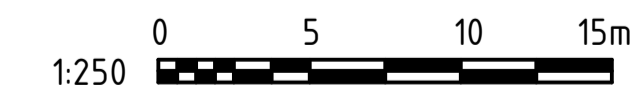
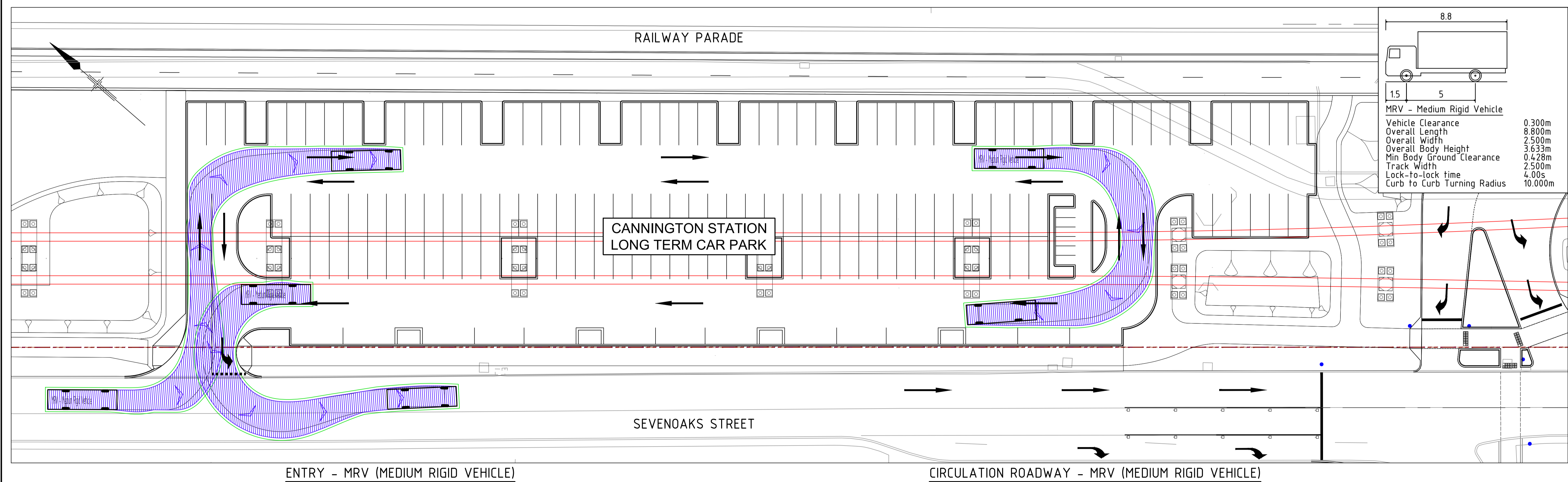
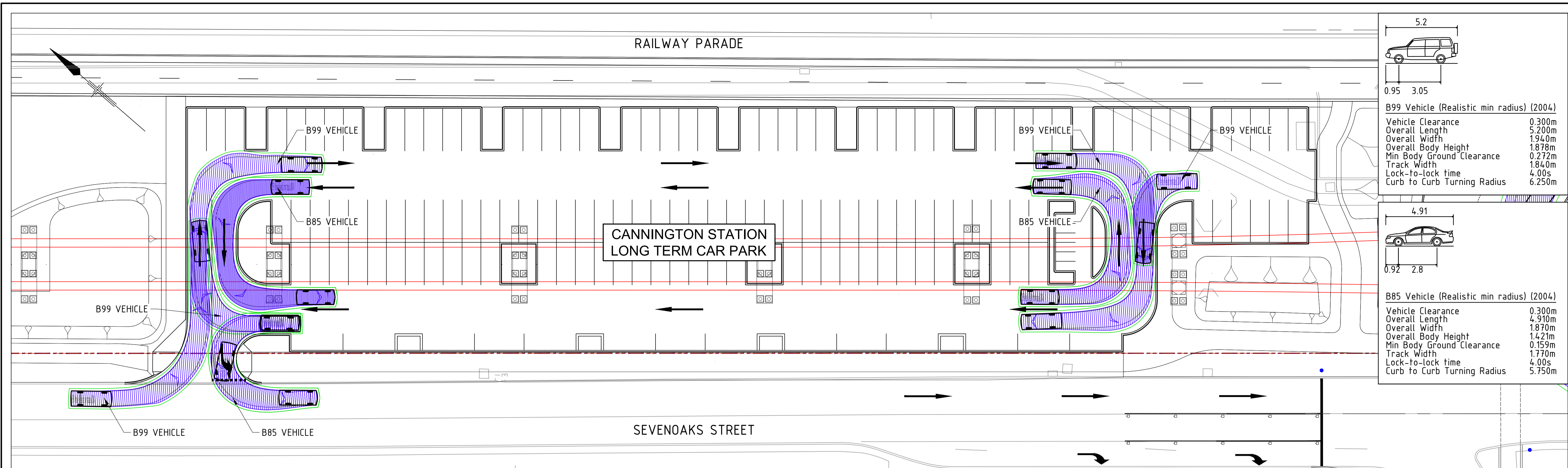
DESIGNED	M.LEAN
DRAWN	P.SPAGNOLO
CHECKED	B.SASHEGYI
APPROVED	C.STEPHENS
DATE	28.06.23

VICTORIA PARK TO CANNING LEVEL CROSSING REMOVAL

**CANNINGTON STATION - SOUTH-EAST CAR PARK**  
CIVIL CORRIDOR - PACKAGE 2  
SWEEP PATH ANALYSIS

PTA Drawing No: LXR-P2-Z3-CN-CI-CR-SKT-00003 | Rev: A1.06





**ISSUED FOR INFORMATION**

A1.06	28.06.23	ISSUED FOR DEVELOPMENT APPLICATION APPROVAL	ML	P.S	B.S	C.S
REV	DATE	AMENDMENT	DSN	DRN	CHK	APP
A1						

ORIG SIZE 100mm  
AT ORIGINAL PLOT SIZE

This document must not be copied without PTA's written permission, and the contents thereof must not be imparted to a third party nor be used for any unauthorised purpose.

ARMADALE LINE UPGRADE ALLIANCE  
Innovation to Reality

Contractor No: LXR-P2-Z3-CN-CI-CR-SKT-00004

REFERENCES
SCALE
1:250 (@A1)
DATUM
HORIZONTAL: PCG20
VERTICAL: AHD71

DESIGNED	M.LEAN
DRAWN	P.SPAGNOLO
CHECKED	B.SASHEGYI
APPROVED	C.STEPHENS
DATE	28.06.23

Government of Western Australia  
Public Transport Authority

VICTORIA PARK TO CANNING  
LEVEL CROSSING REMOVAL

CANNINGTON STATION - NORTHERN CAR PARK  
CIVIL CORRIDOR - PACKAGE 2  
SWEEP PATH ANALYSIS

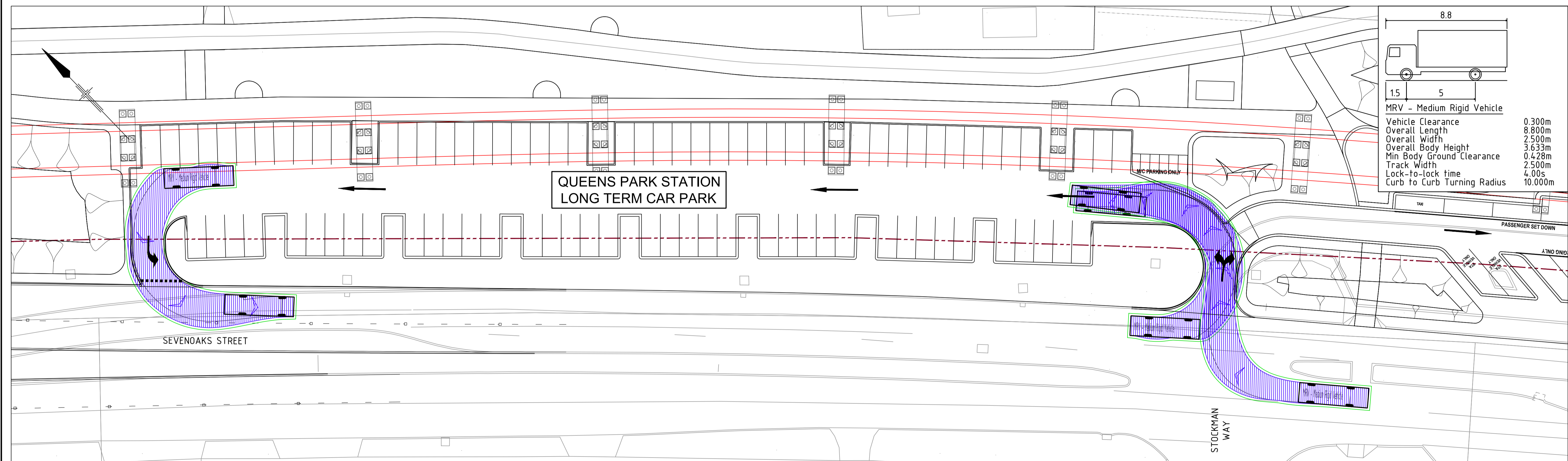
PTA Drawing No: LXR-P2-Z3-CN-CI-CR-SKT-00004 Rev: A1.06





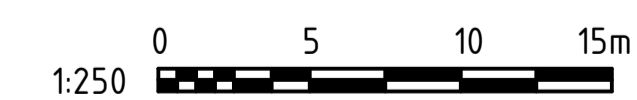
EXIT - B99 VEHICLE

ENTRY - B99 VEHICLE



EXIT - MRV (MEDIUM RIGID VEHICLE)

ENTRY - MRV (MEDIUM RIGID VEHICLE)



**ISSUED FOR INFORMATION**

A105	28.06.23	ISSUED FOR DEVELOPMENT APPLICATION APPROVAL	ML	P.S	B.S	C.S
REV	DATE	AMENDMENT	DSN	DRN	CHK	APP
A1						

ORIG SIZE 0 10 20 30 40 50 100mm  
AT ORIGINAL PLOT SIZE

This document must not be copied without PTA's written permission, and the contents thereof must not be imparted to a third party nor be used for any unauthorised purpose.

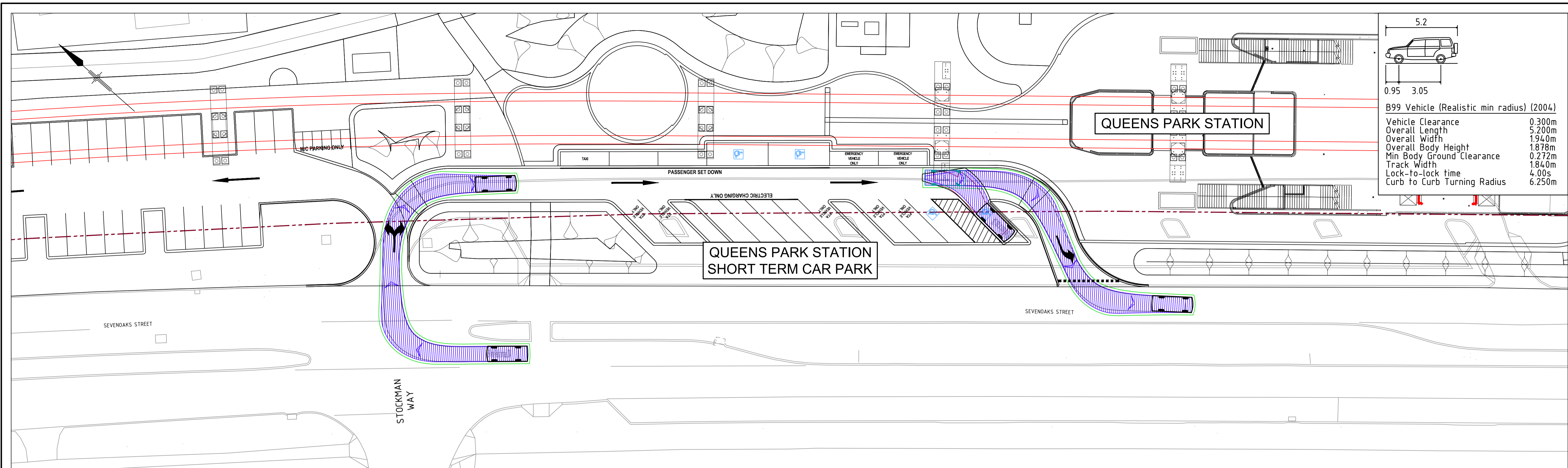
**ARMADALE LINE UPGRADE ALLIANCE**  
Innovation to Reality

Contractor No: LXR-P2-Z3-QP-CI-CR-SKT-00001

REFERENCES	SCALE	DESIGNED
	1:250 (@A1)	M.LEAN
	DATUM	DRAWN
	HORIZONTAL: PCG20	P.SPAGNOLO
	VERTICAL: AHD71	CHECKED
		B.SASHEGYI
		APPROVED
		C.STEPHENS
		DATE
		28.06.23

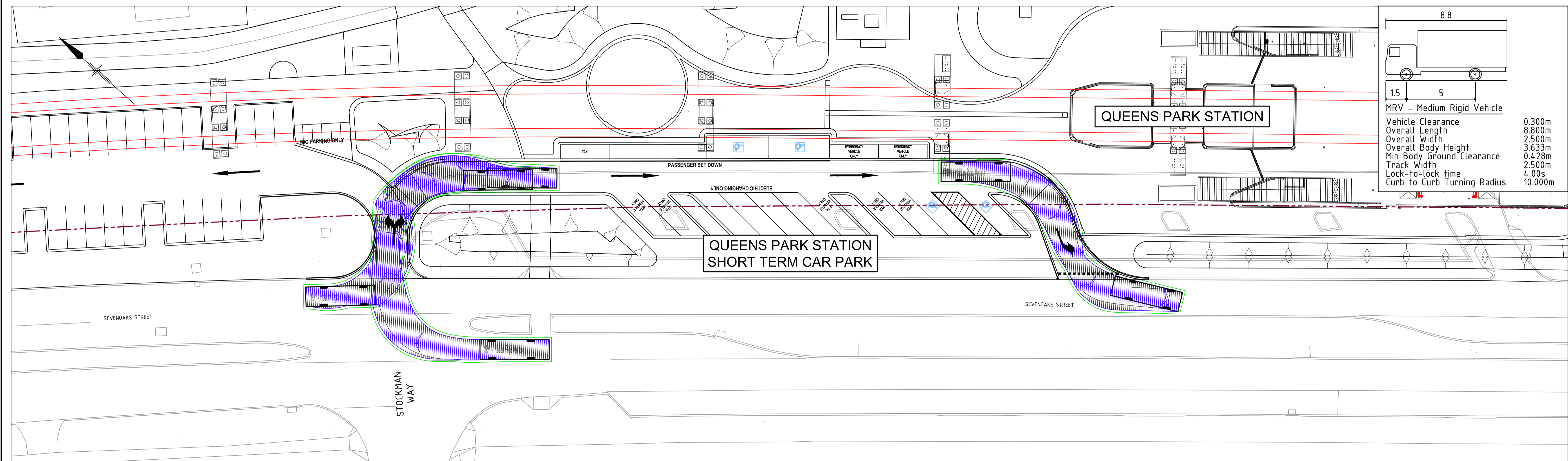
		VICTORIA PARK TO CANNING LEVEL CROSSING REMOVAL
<b>QUEENS PARK STATION - LONG TERM CAR PARK</b>		
CIVIL CORRIDOR - PACKAGE 2		
SWEEP PATH ANALYSIS		
PTA Drawing No: LXR-P2-Z3-QP-CI-CR-SKT-00001		Rev: A1.05





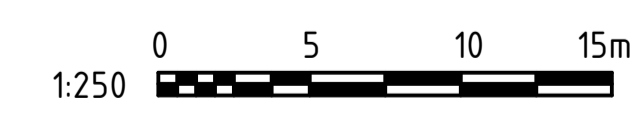
ENTRY - B99 VEHICLE

EXIT - B99 VEHICLE



ENTRY - MRV (MEDIUM RIGID VEHICLE)

EXIT - MRV (MEDIUM RIGID VEHICLE)



**ISSUED FOR INFORMATION**

A1.07	28.06.23	ISSUED FOR DEVELOPMENT APPLICATION APPROVAL	ML	P.S	B.S	C.S
REV	DATE	AMENDMENT	DSN	DRN	CHK	APP
A1						

0 10 20 30 40 50 100mm  
AT ORIGINAL PLOT SIZE

This document must not be copied without PTA's written permission, and the contents thereof must not be imparted to a third party nor be used for any unauthorised purpose.

ARMADALE LINE UPGRADE ALLIANCE  
Innovation to Reality

Contractor No: LXR-P2-Z3-QP-CI-CR-SKT-00002

REFERENCES	SCALE 1:250 (@A1)	DESIGNED M.LEAN
	DATUM HORIZONTAL: PCG20 VERTICAL: AHD71	DRAWN P.SPAGNOLO
		CHECKED B.SASHEGYI
		APPROVED C.STEPHENS
		DATE 28.06.23

Government of Western Australia  
Public Transport Authority

VICTORIA PARK TO CANNING  
LEVEL CROSSING REMOVAL

QUEENS PARK STATION - SHORT TERM CAR PARK  
CIVIL CORRIDOR - PACKAGE 2  
SWEEP PATH ANALYSIS

PTA Drawing No: LXR-P2-Z3-QP-CI-CR-SKT-00002 Rev: A1.07