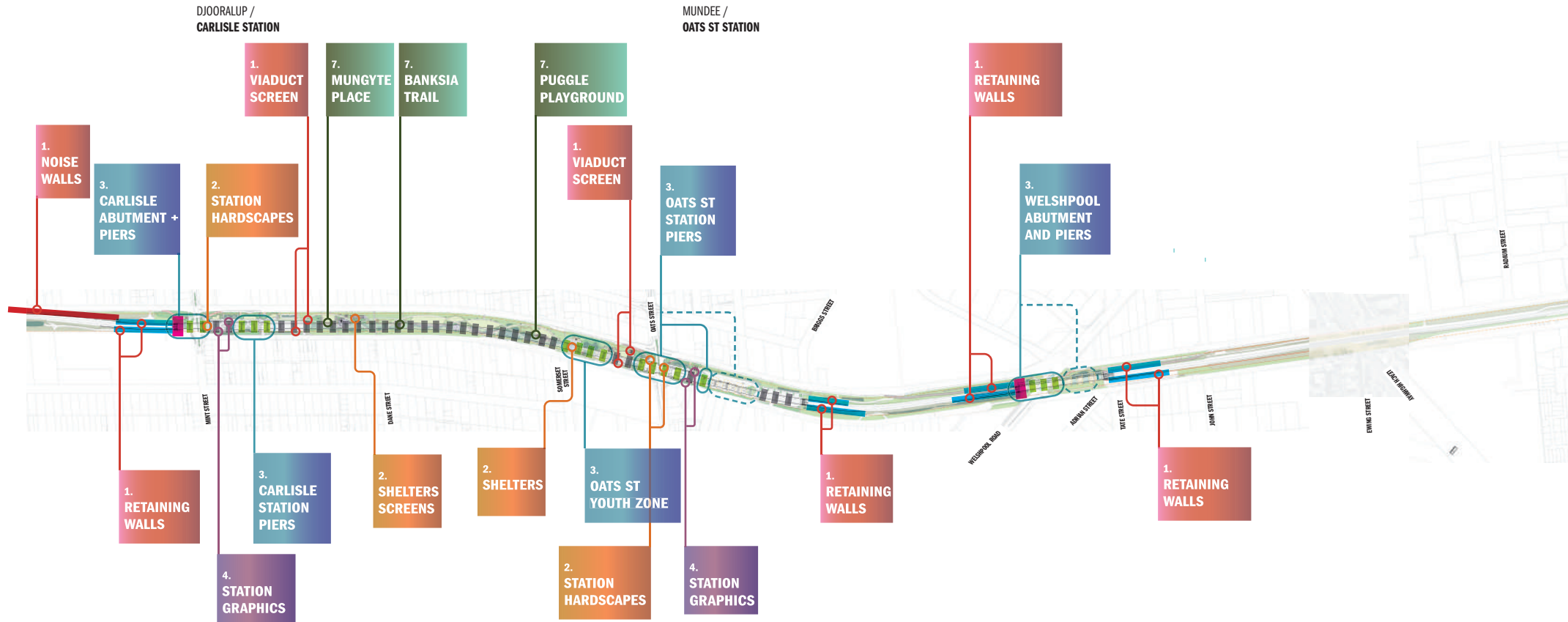


# Appendix M - Public Art Opportunities document prepared by ALUA

# 03 / PUBLIC ART PLAN / OPPORTUNITY MAPPING



- NOISE WALLS
- RETAINING WALLS
- ABUTMENT ART
- PRIMARY MURAL TO PIERS (FULL PIER AND HEADSTOCK PRE-PAINTED)
- SECONDARY/ MINOR MURAL TO PIERS (FULL PIER AND HEADSTOCK PRE-PAINTED)
- PIER AND HEADSTOCK PRE-PAINTED, NO MURAL

**1. VIADUCT SCREENING + EMBANKMENT WALLS**

**2. HARDSCAPES AND SHELTERS**

**3. STREET ART PROGRAM**





**VIADUCT SCREENS + RETAINING WALLS**

**Location**

Linewide - various locations along the line

**Overview**

With designs developed by Barry McGuire, the viaduct screens and retaining walls reflect Noongar shield designs which are a symbol of protecting people as they travel through country, along the railway corridor and line above. The viaduct provides a connected identity and narrative along the whole corridor, with the opportunity for Noongar place names integrated with each specific station.

**Objectives**

- To celebrate Noongar sense of place through integrated patterns
- To provide a linewide narrative and cohesive visual identity
- To provide an opportunity to connect with the site's rich Noongar history and sense of place.

**Artist Procurement Approach**

Direct Engagement of Barry McGuire (during AD phase of the project)

**Budget Guide**

\$80,000 (artist design only scope)

Additional \$371,945 construction extra/over for retaining wall repetitive relief pattern to 25% of panel, and \$250,000 to provide perforated viaduct pattern.



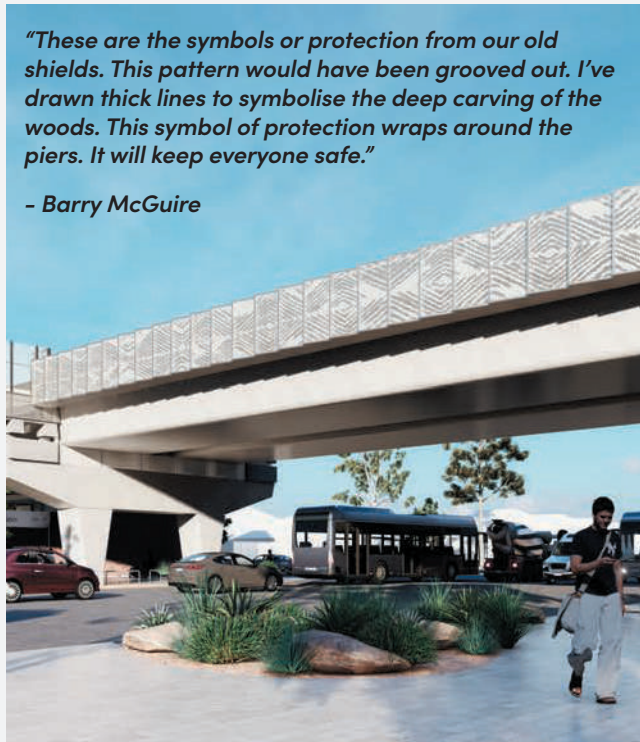
Example of Noongar Shields



Artwork By Barry McGuire

*“These are the symbols or protection from our old shields. This pattern would have been grooved out. I’ve drawn thick lines to symbolise the deep carving of the woods. This symbol of protection wraps around the piers. It will keep everyone safe.”*

*- Barry McGuire*



Example of Integration - Archer Street





## 05 / PUBLIC ART PLAN / OPPORTUNITY 2

### HARDSCAPES + SHELTERS

#### Location

Linewide - various locations along the line

#### Overview

Across the line, a range of hardscape surfaces, including pavement, shelters, low walls, seating and screens, present an exciting opportunity for Noongar artists to design embedded artwork treatments. Designs, patterns, graphics and text may be sandblasted, laser-cut, perforated and/or routed into surfaces hardscape surfaces.

#### Objectives

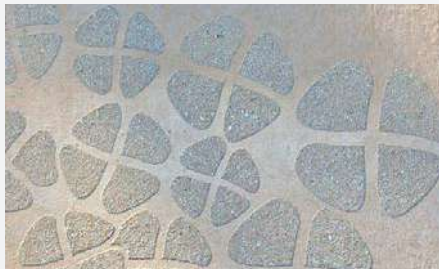
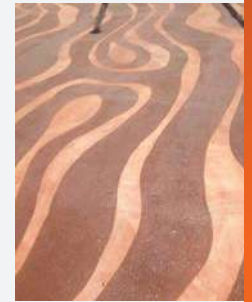
- To celebrate Noongar sense of place through content, pattern, text and colour.
- To provide an organic and inviting human-scale elements that works in harmony with the endemic planting palette.
- To provide a fine-grain discovery experiences for commuters and the general public to connect with the site's rich Noongar history and sense of place.

#### Artist Procurement Approach

Open EOI promoted to Noongar artists to attend a Design Assist Workshop. Up to 10 artists supported to develop integrated designs.

#### Budget Guide

Total pool of \$120,000 for artists fees (design only scope)  
\$15,000 concept design fees (\$1,500 x 10)  
\$12,000 workshop costs  
Additional \$332,750.00 construction cost extra/over for surface sandblasting/inlay and perforated screens.



### STREET ART PROGRAM

#### Location

Carlisle Station, Oats Street Station, Welshpool Road, Mill Street, Wharf Street, Cannington Station, Gibbs Street, Beckenham Station

#### Overview

Station plazas and activation zones will feature expansive concrete surfaces, including piers, viaducts, skate parks and ground plane hardscapes. Collectively, these surfaces provide a significant 'canvas' for artists to explore applied treatments, such as murals and shallow relief sculptures to wall/pier structures. Led by a core artist team/collective, this opportunity will be procured as one large commission but span multiple locations. This approach will create a cohesive narrative, anchored by common creative elements, but still tell a nuanced story across the line.

#### Objectives

- Provide an engaging and memorable layered narrative of place and culture
- Create a line-wide identity across multiple stations, conceptually linking them together
- Provide an opportunity for community engagement and local/emerging artist mentoring

#### Artist Procurement Approach

EOI callout to build cross disciplinary team of artists - mix of established and emerging with small group of leads.

#### Budget Guide

\$1,700,000 line-wide (D+C contract)

\$18,000 for concept design fees (\$6000 x 3)





## 05 / PUBLIC ART PLAN / OPPORTUNITY 4

### PLATFORM GRAPHICS

#### Location

Carlisle Station, Oats Street Station, Queens Park Station, Cannington Station, and Beckenham Station

#### Overview

Each of the stations will incorporate a graphic treatment applied or embedded into architectural surfaces, such as walls and ceilings. Designs, patterns, graphics and/or text may be sandblasted, laser-cut, perforated and/or routed into surfaces hardscape surfaces, or applied using paint or other printed treatments. One artists will be commissioned to respond to this opportunity across all stations.

#### Objectives

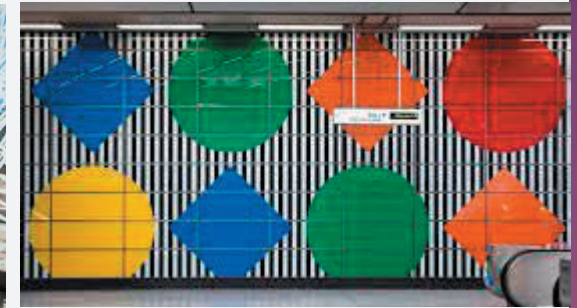
- To provide a human-scale experience for commuters and the general public to connect with the site's history and sense of place.
- To provide visual interest through pattern, colour and/or texture.

#### Artist Procurement Approach

Open EOI promoted to WA artists. Artists will be invited to submit an Expression of Interest in response to the Artwork Brief, then shortlisted to prepare a Concept Proposal.

#### Budget Guide

\$250,000 (D+C budget across 5 stations)  
\$9,000 for concept design fees (\$3000 x 3)





## 05 / PUBLIC ART PLAN / OPPORTUNITY 5

### SCREENS AND LIGHTING ARTWORK

#### Location

Cannington Station

#### Overview

Cannington Station has been identified as an opportunity for a dynamic artwork application to the screens enveloping the station building and platform. Perforated screens will enhance the east and west side of the station building. Programmable and dynamic vertical strip lighting will enhance the screens to the west side of station building, creating a visible landmark on approach from Cecil Ave. The screen artwork and lighting will create a focus point to contribute to Cannington Station's identity, with greater impact during the evening.

#### Objectives

- Contribute to the station identity through activating a highly visible location.
- Provide a dynamic and memorable entry statement experience
- Create a day/night presence

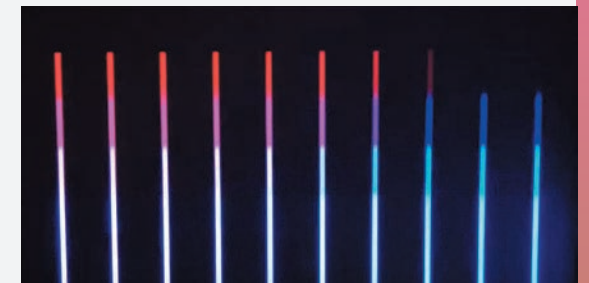
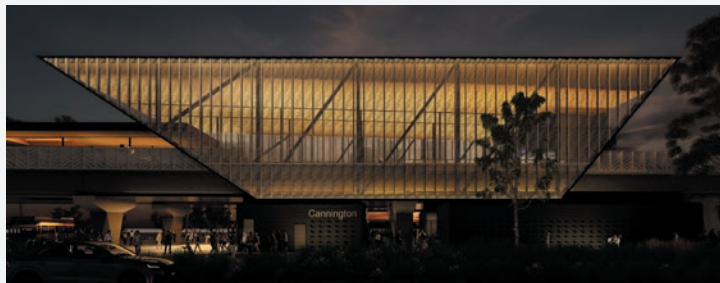
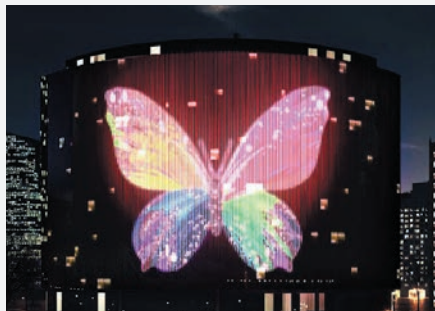
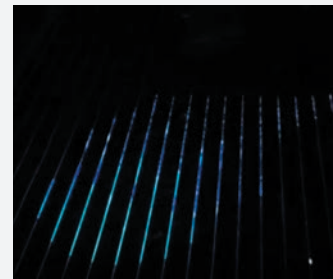
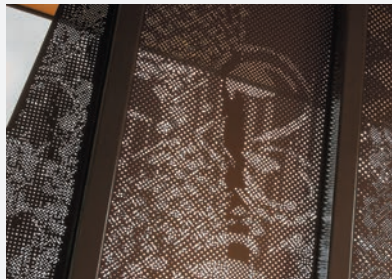
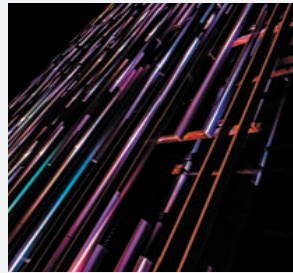
#### Artist Procurement Approach

Open EOI promoted to WA artists. Artists will be invited to submit an Expression of Interest in response to the Artwork Brief, then shortlisted to prepare a Concept Proposal.

#### Budget Guide

\$250,000 (D+C budget)

\$9,000 for concept design fees (\$3000 x 3)





**SISTER KATE'S REFLECTIVE SPACE**

**Location**

Queens Park Station

**Overview**

Established in Queen's Park in 1934, Sister Kate's (located on Treasure Rd, 800m away) was identified specifically as a home for Aboriginal children taken from their families by force, now known as the Stolen Generation. This artwork is to sit within an allocated space created around interpretation and reflection of the memories of those impacted by Sister Kate's. Artwork may be applied to concrete surfaces through sandblasting and colour applications that move from piers to ground plane.

**Objectives**

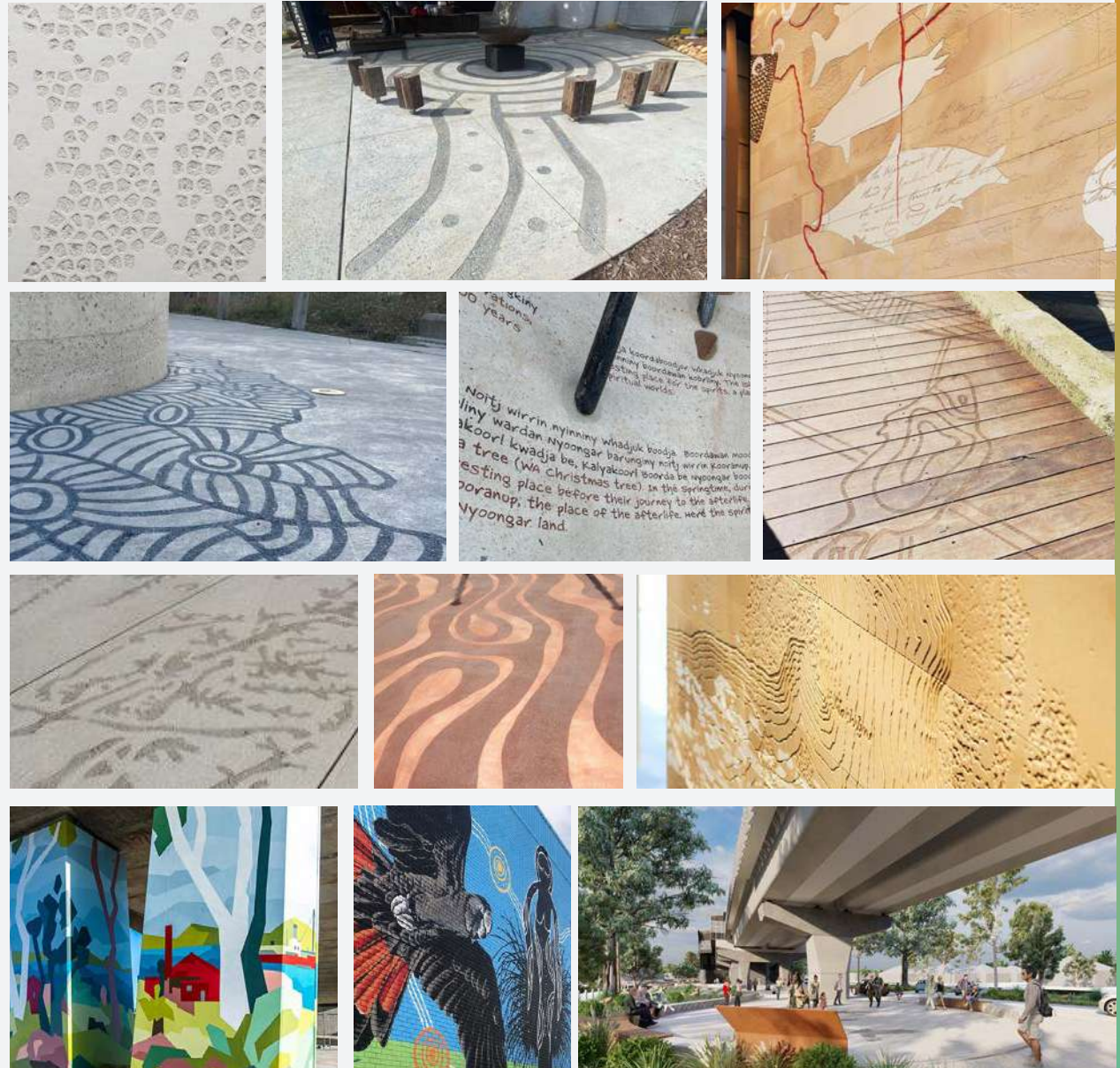
- Work in close consultation with stakeholders to create a respectful and impactful response to the history and memory of nearby Sister Kate's
- To complement the existing Sister Kate's Reflective Space / Interpretative zone architecture, through collaboration with relevant architects and landscape architects.

**Artist Procurement Approach**

Open EOI promoted to First Nations artists with strong connections to WA. Artists will be invited to submit an Expression of Interest in response to the Artwork Brief, then shortlisted. Selected Artist/s will participate in co-creation workshops with Sister Kate's community members in order to develop concepts.

**Budget Guide**

- \$200,000 (D+C budget).
- \$4,500 for artists to prepare engagement plan (\$1,500 x 3)
- \$10,000 to run co-creation workshops and develop concept designs with community.





## 05 / PUBLIC ART PLAN / OPPORTUNITY 7

### PLAY BASED ARTWORK

#### Locations

Mungyte Place, Banksia Discovery Trail, Puggle Playground, Youran Play Space, Rail Yard Play Space, Cannington Climbing Zone, Beckenham Station/Precinct Play Area (TBC)

#### Overview

Artists will be commissioned to design a series of artworks, applied/integrated to playscape items and surrounding surfaces, through carving, applied colour and custom inlays. Artworks will be durable but decorative, encouraging a sense of play, discovery and whimsical interaction. Incorporating texture, pattern and colour will provide a dynamic sensory experience. An artist will be appointed to work in collaboration with the design team to inform the design of play elements across multiple play areas.

#### Objectives

- Create an inviting play areas for children and families that provides engaging, memorable and accessible experience that ignites the senses
- Enhance the nature-based themes of the corridor, with patterns and textures drawn from the local environment and ecology to be celebrated.

#### Artist Procurement Approach

Open EOI promoted to WA artists. Artists will be invited to submit an Expression of Interest in response to the Artwork Brief, then shortlisted to prepare a Concept Proposal.

#### Budget Guide

\$350,000 (\$50,000 will be assigned to each of the seven play zones) to cover artist fees and costs associated with treatments.

\$10,500 for concept fees (\$1,500 x 7) and \$12,000 workshop costs

