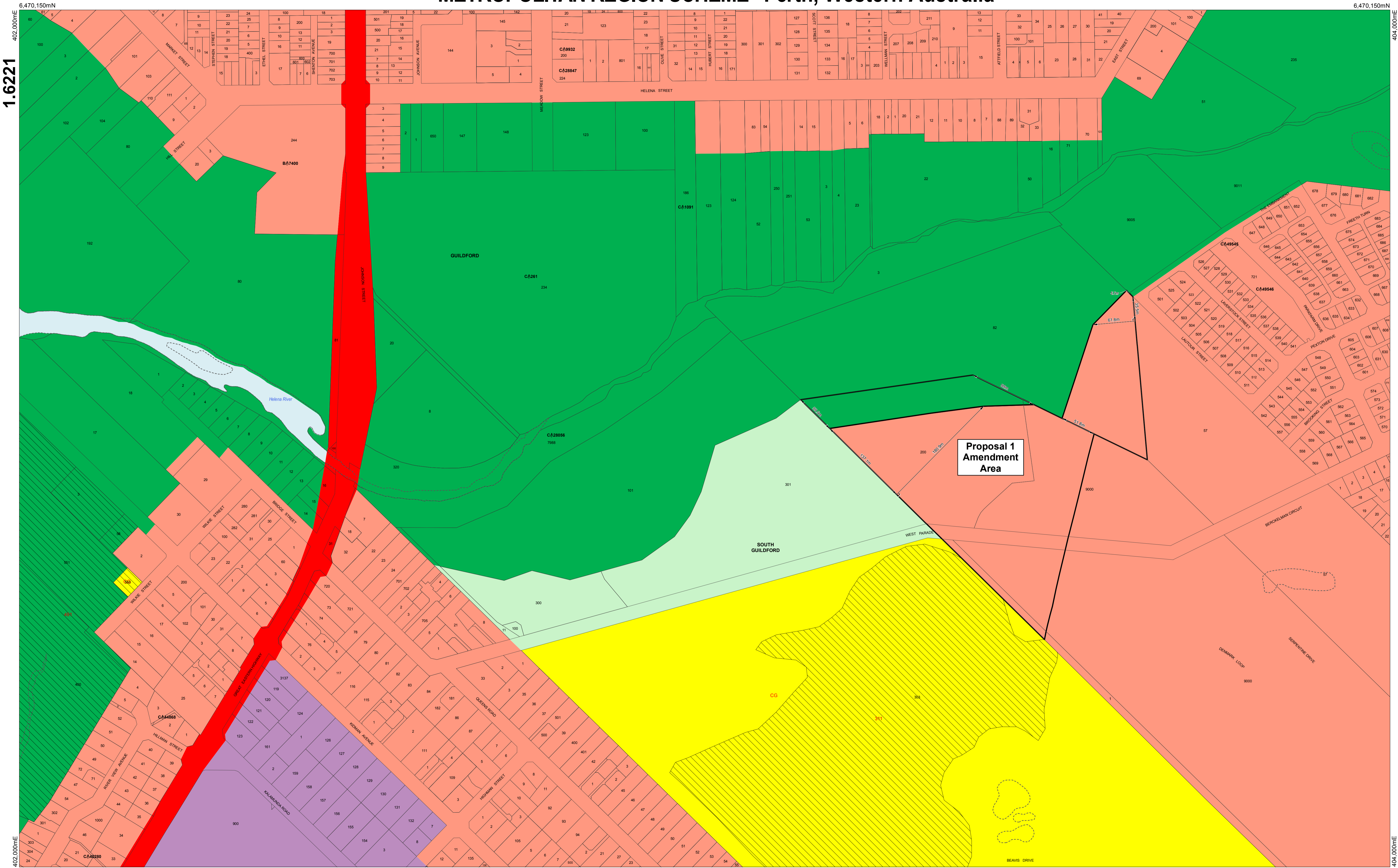


METROPOLITAN REGION SCHEME - Perth, Western Australia



1.6221

Important notes
 Environmental condition areas are not shown on these maps; refer to the MRS Text for details of environmental conditions.
 Redevelopment scheme areas are shown on these maps, although they are not within the jurisdiction of the Western Australian Planning Commission.
 Refer to the relevant redevelopment authority's scheme and maps for details.
 For Port Kennedy locality refer to the Port Kennedy Development Agreement Act 1992.

Technical notes
 Horizontal datum - Geocentric datum of Australia 1994
 Grid base - Map Grid of Australia
 Projection - Transverse Mercator, graphically projected in zone 50

Data Sources
 Cadastral data from the Western Australian Land Information Authority Spatial Cadastral Database (SCDB) - permission no. LI 862-2016-1
 Topographic features derived from StreetSmart Street Directory 2013

Production notes
 Published by the Department of Planning, Lands and Heritage, Gordon Stephenson House, 140 William Street, Perth, WA 6000
 The scheme is not intended to indicate the land use allocation under any local government provision.
 © State of Western Australia. This map may not be reproduced wholly or in part without the written permission of the Department.
 Website - www.planning.wa.gov.au - to access electronic copies of the MRS
 Email - spatialdata@planning.wa.gov.au for digital data or for written permission.

Metropolitan Region Scheme Legend

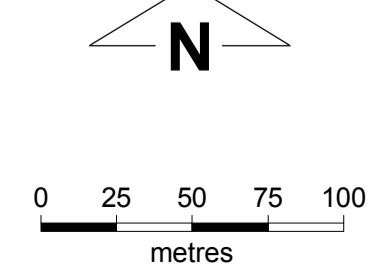
scheme boundary	Water catchments	Public purposes - defined as follows: H Hospital HS High school TS Technical school CP Car park U University CC Commonwealth Government SEC State Energy Commission SU Special uses WISO Water Authority of WA P Prison	Parks and recreation	Civic and cultural	Central city area	Rural - water protection
Restricted public access	Waterways	Industrial	Railways	Roads: Primary regional roads Other regional roads	Urban deferred	Private recreation
State forests	Roads: Primary regional roads Other regional roads	Special industrial	Port installations	State forests	Rural	Bush forever area
Reserved lands	Roads: Primary regional roads Other regional roads	Rural	State forests	State forests	Rural	Redevelopment schemes

Standard Truncation

Note: All truncations are standard unless otherwise shown

Western Australian Planning Commission
 This is to certify that plan no. **1.6221** was approved by resolution at a meeting held on **20 September 2017**
 Minute no. **WAPC / 259.11.4**
 Signed:
 Effective: **RS_Date**

Geospatial Research and Modelling Certification
 Manager: T Servaas
 Geospatial Officer: J Ballarotta
 Examined: A Power



LOCATION OF DETAIL PLAN

File: 833/02/21/0126P V
 Plan: MRS Sheet 16
 Ref no: 2938v1
 Amendment No: 1331 /57
 Amendment Plan: 3.2709

DETAIL PLAN No. 1.6221