

**SITE CLASSIFICATION REPORT**  
CERTIFICATE 2598232

**CLIENT** FGP HOLDINGS P/L T/A FGP DESIGNS  
**JOB ADDRESS** **PROPOSED DEVELOPMENT - LOT 211 #2931 WEST SWAN RD CAVERSHAM**  
**CLIENT JOB NO.**  
**OWNER**  
**STRUCTERRE JOB NO.** S1093650  
**DATE OF ASSESSMENT** 17/3/23

**SITE RECORD**

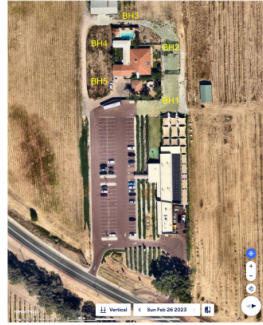


**SITE CLASSIFICATION** **M** *(in accordance with AS2870)*  
**FOOTING DETAIL** **CM4**  
**SAND PAD** **Minimum 800mm above cut base**  
**BUSHFIRE PRONE AREA** **Not in a Bushfire Prone Area (see NOTE 2.)**  
**CORROSION CLASSIFICATION** **R1** *(Durability Class in accordance with AS3700)*  
**WIND CLASSIFICATION** **N2** *(in accordance with AS4055)*  
**-TERRAIN CATEGORY** 2  
**-TOPOGRAPHIC** T0  
**-SHIELDING** No Shielding

## SOIL PROFILE

- BOREHOLE 1: 0 - 200 FILL - gravelly sand - pale brown; 200 - 400 SAND - brown; 400 - 1100 sandy CLAY trace gravel - brown; 1100 hard ground refusal.
- BOREHOLE 2: 0 - 200 FILL - gravelly sand - pale grey; 200 - 400 SAND - brown; 400 - 1000 sandy CLAY - brown; 1000 hard ground refusal.
- BOREHOLE 3: 0 - 100 topsoil; 100 - 200 SAND - brown; 200 - 1000 CLAY - brown; 1000 hard ground refusal.
- BOREHOLE 4: 0 - 200 topsoil; 200 - 2500 (CLAY trace gravel with sand with 14.5% linear shrinkage and 97% passing the 0.425mm sieve) - brown; 2500 end of hole.
- BOREHOLE 5: 0 - 200 topsoil; 200 - 2500 sandy CLAY - brown; 2500 end of hole.

## APPROXIMATE BOREHOLE LOCATIONS



### NOTE 1 Explanatory Notes & Standard Recommendations

This site classification report must be read in conjunction with the applicable Explanatory Notes & Standard Recommendations. For A Class sites, refer to the Explanatory Notes and Standard Recommendations for Stable (A Class) Sites, version 1.0 July 2018. For S, M, H1, H2 & E Class sites, refer to the Explanatory Notes and Standard Recommendations for Reactive (S, M, H1, H2 & E Class) Sites version 1.0 July 2018. For Equivalent Class sites, refer to the Explanatory Notes and Standard Recommendations for Equivalent Class Sites, version 1.0 July 2018.

### NOTE 2 Bushfire - Prone Area

The Site may be situated in a bush fire prone area in accordance with the Department of Fire and Emergency Services (DFES) Bushfire Prone Area Map (Reference: <http://www.dfes.wa.gov.au/regulationandcompliance/bushfireproneareas/>) the current version at the time of this assessment. A Bushfire Attack Level (BAL) assessment may be required for this site, please confirm with the local authority. Should you require an assessment, please contact this Office.

## ADDITIONAL NOTES / REQUIREMENTS

### Sample Retrieval Probe

This report has been prepared using the Sample Retrieval Probe. A number of boreholes are conducted across the site or building area, in order to determine the soil profiles and provide a representation of the ground conditions. Where reactive material is encountered within the zone of influence, laboratory analysis is conducted in accordance with AS1289 3.1.2, 3.2.1, 3.3.1, 3.4.1 and 3.6.1.

### Base Assessment

The cut base shall be inspected by a representative from this office prior to the placement of the sand pad. The requirement for sub-soil drains and waterproof membrane will be determined at the time of the base assessment.

**Internal Thickenings**

Internal thickenings are required for the proposed residence as specified on the recommended footing detail. Please provide a copy of the architectural drawings to this Office, so that the internal thickenings can be designed and drawn in accordance with AS2870.

**Internal Thickening Inspection**

This detail is subject to a internal thickening layout inspection. It is recommended that an inspection be conducted by a representative from this Office prior to concrete pour.

**Pavement Material**

At the time of assessment, the site was covered with pavement material and utilised as a carpark. The pavement material and any drainage sumps will require removal and backfilled with clean, free draining, compacted sand fill, prior to construction.

**Superseded**

This report supersedes certification number 2598232, issued 28/3/2023.

**-- END OF REPORT --**