



PORT HEDLAND ANDERSON STREET
LOTS 465, 466, 470 & 471
DEVELOPMENT APPLICATION

UDLA

TABLE 1 EDITION DETAILS

PORT HEDLAND ANDERSON ST CONCEPT	
Title	Task 02 - Development Application
Production Date	26th May 2023
Prepared By	UDLA
Author	Ruby Coombes, Hamish Firth, Scott Lang
Status	Development Application
UDLA Project Code	POHAC

TABLE 2 DOCUMENT REGISTER

DOCUMENT REGISTER			
Version	Date	Amendments	Prepared By
A	22/05/23	Draft - Issued	RC
B	24/05/23	Draft - Issued	RC
C	26/05/23	DA - Issued	RC

Prepared for: DMG Architects

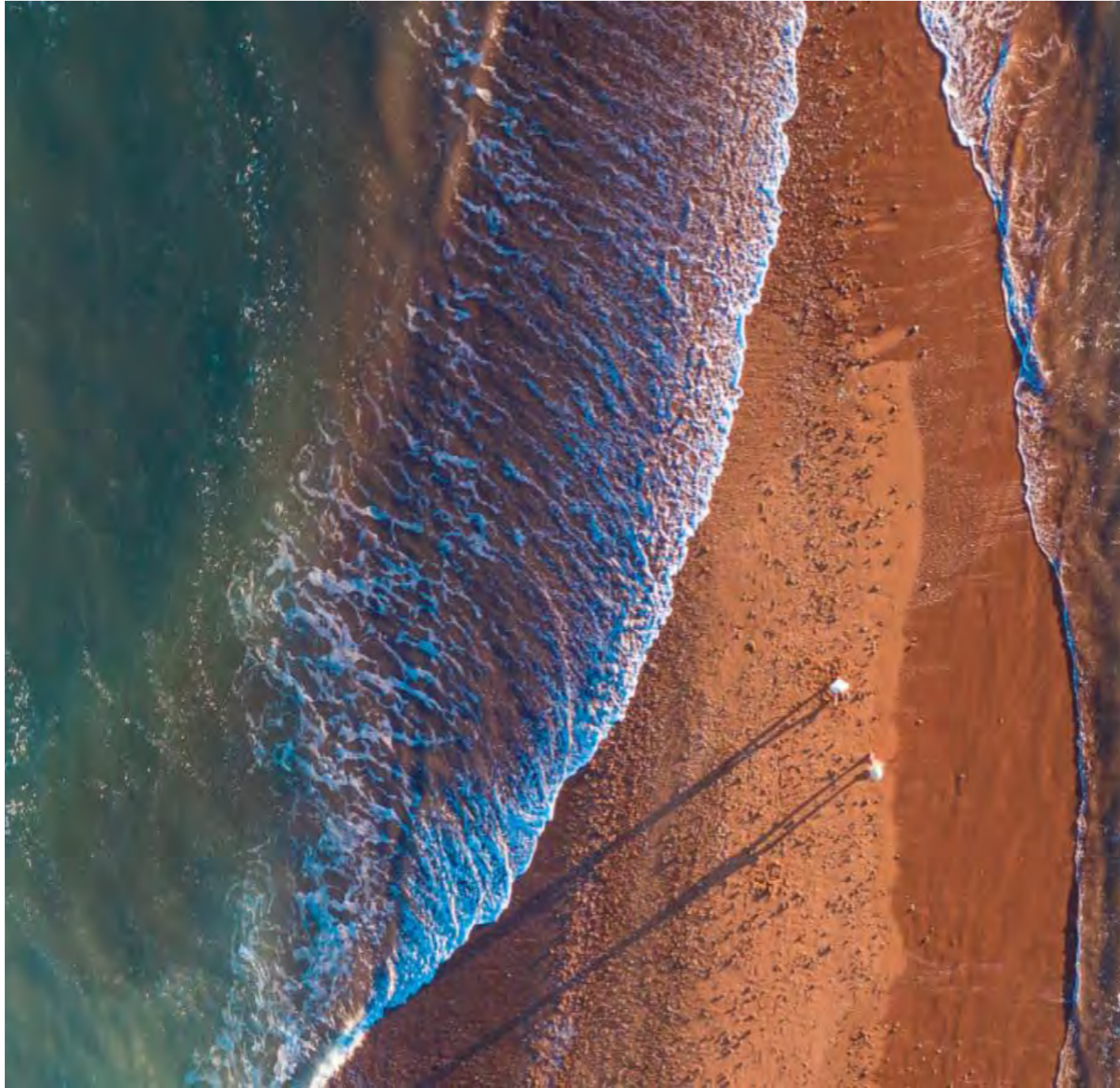


Prepared by: UDLA



Contact: Ruby Coombes
Position: UDLA Designer
Phone: (08) 9336 7577
Email: ruby@udla.com.au

LEVEL 1A, 3-5 JOSEPHSON STREET
 FREMANTLE, 6160 WA
 HELLO@UDLA.COM.AU | (08) 9336 7577



We acknowledge the Kariyarra people as the Traditional Owners of the land on which the Anderson Street concept site stands today. We pay respect to the Kariyarra people, and Elders both past and present whose knowledge and wisdom has and will ensure the continuation of cultural and traditional practices.

CONTENTS



1.0	SITE CONTEXT	5
1.1	SUBJECT SITE	6
2.0	GROUND FLOOR	7
2.1	GROUND FLOOR - INDICATIVE IMAGERY	8
2.2	MASTER PLAN	9
2.3	FOCUSED MASTER PLAN	10
2.4	GROUND FLOOR - ELEVATION	11
2.5	GARDEN BED TYPOLOGIES	12
2.6	GB01 - ENTRANCE PLANTING	13
2.7	GB01A - SECONDARY ENTRANCE PLANTING	14
2.8	GB02 - BOUNDARY PLANTING	15
2.9	TR01 - ENTRANCE TREE PLANTING	16
2.10	TR02 - BOUNDARY TREE PLANTING	17
2.11	GROUND FLOOR - MATERIALS, FURNITURE AND FIXTURES	18
3.0	2ND FLOOR	19
3.1	2ND FLOOR - INDICATIVE IMAGERY	20
3.2	MASTER PLAN	21
3.3	2ND FLOOR - GB04 ELEVATION	22
3.4	2ND FLOOR - POOL SECTION	23
3.5	GARDEN BED TYPOLOGIES	24
3.6	GB03 - POOL PLANTING	25
3.7	PL01 - FEATURE PLANTING	26
3.8	GB04 - PLANTER BOX PLANTING	27
3.9	2ND FLOOR - MATERIALS, FURNITURE AND FIXTURES	28

1.0 SITE CONTEXT




1.1 SUBJECT SITE



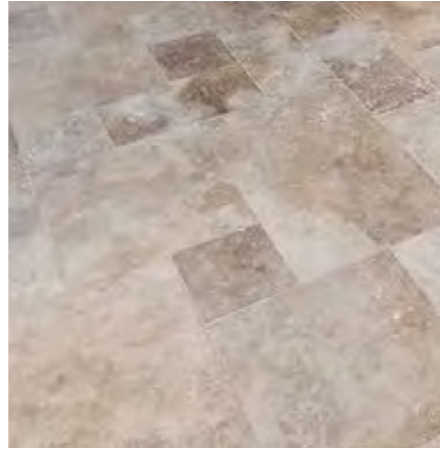
KEY
- - Subject site lot boundary

SCALE
1:2500 @ A3



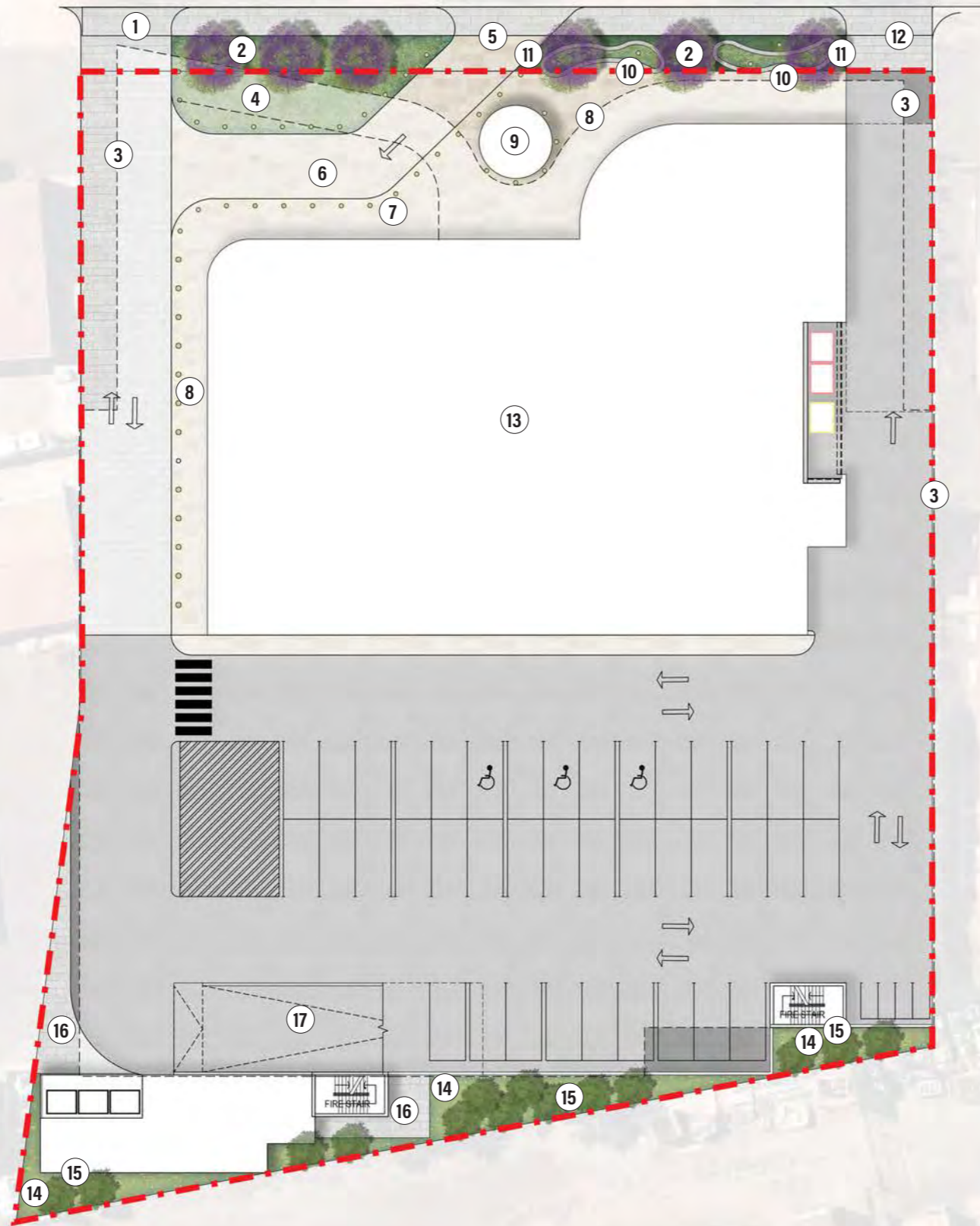
2.0 GROUND FLOOR

2.1 GROUND FLOOR - INDICATIVE IMAGERY



2.2 GROUND FLOOR MASTERPLAN

ANDERSON STREET



KEY

- ① PV02 brick paving main vehicle entry/exit
- ② TR01 Entrance feature trees
- ③ Canopy over ground floor
- ④ GB01 entrance planting
- ⑤ Porte cochere entrance
- ⑥ Porte cochere
- ⑦ FN02 in ground lighting
- ⑧ PV01 unit paving
- ⑨ Feature tree OR art sculpture
- ⑩ FN01 custom concrete raised planter seat
- ⑪ GB01A (surrounding FN01)
- ⑫ PV02 brick paving service vehicle exit only
- ⑬ Hotel
- ⑭ GB02 boundary planting
- ⑮ TR02 boundary trees
- ⑯ PV02 brick paving
- ⑰ Ramp to upper level

--- Lot boundary

UDLA

LEVEL 1A, 3-5 JOSEPHSON STREET, FREMANTLE, 6160
08 9336 7577

CLIENT
DMG ARCHITECTS

PROJECT
**PORT HEDLAND ANDERSON ST
CONCEPT**

DRAWING
GROUND FLOOR MASTERPLAN

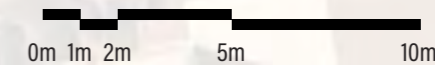
DRAWING NUMBER
LA101

ISSUE DATE
MAY 2023

REVISION
B

SCALE
1:200 @ A3

DRAWN BY
RC



2.3 FOCUSED GROUND FLOOR MASTERPLAN

ANDERSON STREET



KEY

- ① PV02 brick paving main vehicle entry/exit
- ② TR01 Entrance feature trees
- ③ Canopy over ground floor
- ④ GB01 entrance planting
- ⑤ Porte cochere entrance
- ⑥ Porte cochere
- ⑦ FN02 in ground lighting
- ⑧ PV01 unit paving
- ⑨ Feature tree OR art sculpture
- ⑩ FN01 custom concrete raised planter seat
- ⑪ GB01A (surrounding FN01)
- ⑫ PV02 brick paving service vehicle exit only
- ⑬ Hotel

--- Lot boundary

UDLA

LEVEL 1A, 3-5 JOSEPHSON STREET, FREMANTLE, 6160
08 9336 7577

CLIENT
DMG ARCHITECTS

PROJECT
**PORT HEDLAND ANDERSON ST
CONCEPT**

DRAWING
**FOCUSED GROUND FLOOR
MASTERPLAN**

DRAWING NUMBER
LA102

ISSUE DATE
MAY 2023

REVISION
B

SCALE
1:100 @ A3

DRAWN BY
RC

2.4 GROUND FLOOR ELEVATION



UDLA

LEVEL 1A, 3-5 JOSEPHSON STREET, FREMANTLE, 6160
08 9336 7577

CLIENT
DMG ARCHITECTS

PROJECT
**PORT HEDLAND ANDERSON ST
CONCEPT**

DRAWING
GROUND FLOOR ELEVATION

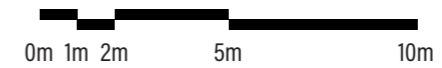
DRAWING NUMBER
LA103

ISSUE DATE
MAY 2023

REVISION
B

SCALE
1:200 @ A3

DRAWN BY
RC



2.5 GARDEN BED TYPOLOGIES



GB01 - ENTRANCE PLANTING

PLANTING TO SERVE AS AN INTRODUCTION TO THE HOTEL. MIXTURE OF NATIVE AND EXOTIC PLANTS WHICH HIGHLIGHT AND COMPLIMENT THE SURROUNDING PILBARA LANDSCAPE.



GB02 - BOUNDARY PLANTING

PLANTING AREAS LOCATED AT REAR BOUNDARY TO PROVIDE A BARRIER BETWEEN HOTEL AND ADJOINING LOTS. NATIVE PLANTING WILL ENSURE SPECIES THRIVE.



GB03 - POOL PLANTING

MIXTURE OF NATIVE AND EXOTIC PLANTING WITH COOL TONES AND SOFT FEATURES TO INDUCE A CALMING AND RELAXING ATMOSPHERE FOR GUESTS USING THE POOL SERVICES.



GB04 - PLANTER PLANTING

PLANTERS WILL ACT AS A FOCAL POINT OF HOTEL WHICH WILL INCLUDE A VARIETY OF PLANTS. NATIVE PLANTS WILL CORRELATE WITH ENTRANCE PLANTING WHILST CLIMBING/CREEPING PLANTS WILL AESTHETICALLY COMPLIMENT HOTEL FRONTAGE.

2.6 GB01 - ENTRANCE PLANTING

PLANTING TO SERVE AS AN INTRODUCTION TO THE HOTEL. NATIVE PLANTS WHICH HIGHLIGHT AND COMPLIMENT THE SURROUNDING PILBARA LANDSCAPE.



ACACIA ADOXA PEDLEY VAR. ADOXA
WATTLE
H: 0.1-0.75M X W: 1.2M



ACACIA GREGORII
GREGORY'S WATTLE
H: 0.5M X W: 2M



BRACHYSCOME IBERIDIFOLIA
PILBARA DAISY
H: 0.7M X W: 1M



CYMBOPOGON AMBIGUOUS
AUSTRALIAN LEMON SCENTED GRASS
H: 0.7M X W: 1M



EREMOPHILA HYGROPHANA
EMU BUSH
H: 0.6M X W: 0.6M



GOMPHRENA CANESCENS
BACHELORS BUTTONS
H: 0.7M X W: 0.3M



IPOMOEA BRASILIENSIS
BEACH MORNING GLORY
H: 0.2M X W: 3M



MYOPORUM PARVIFOLIUM
CREEPING BOOBIALLA
H: 0.3M X W: 3M



SWAINSONA FORMOSA
STURTS DESERT PEA
H: 0.5-0.75M X W: 1-3M



SCAEVOLA PARVIFOLIA
CAMEL WEED
H: 0.5M X W: 0.5M



TEUCRIUM RACEMOSUM
GREY GERMANDER
H: 0.4M X W: 0.4M



TINOSPORA SMILACIANA
SNAKE VINE
H: 0.2M X W: 0.3M

NOTE:

- ALL PLANTS SUBJECT OF TOWN OF PORT HEDLAND PREFERRED PLANTING GUIDE
- ALL PLANTS IN GB01 MIX 750MM (MAX) OR UNDER IN HEIGHT

2.7 GB01A - SECONDARY ENTRANCE PLANTING

PLANTING SURROUNDING FN01 RAISED GARDEN BED SEATING TO ELEVATE GB01 PLANTING INSIDE PLANTERS. GROUNDCOVERS.



ACACIA GREGORII
GREGORY'S WATTLE
H: 0.5M X W: 2M



IPOMOEA BRASILIENSIS
BEACH MORNING GLORY
H: 0.2M X W: 3M



MYOPORUM PARVIFOLIUM
CREEPING BOOBIALLA
H: 0.3M X W: 3M



TEUCRIUM RACEMOSUM
GREY GERMANDER
H: 0.4M X W: 0.4M



TINOSPORA SMILACIANA
SNAKE VINE
H: 0.2M X W: 0.3M

NOTE:
• ALL PLANTS SUBJECT OF TOWN OF PORT HEDLAND PREFERRED PLANTING GUIDE

2.8 GB02 - BOUNDARY PLANTING

PLANTING AREAS LOCATED AT REAR BOUNDARY TO PROVIDE A BARRIER BETWEEN HOTEL AND ADJOINING LOTS. NATIVE PLANTING WILL ENSURE SPECIES THRIVE.



ACACIA ADOXA PEDLEY VAR. ADOXA
WATTLE
H: 0.1-0.75M X W: 1.2M



ACACIA ADOXA VAR. SUBGLABRA
WATTLE
H: 0.5M X W: 1.2M



ACACIA HILLIANA
HILLS TABLETOP WATTLE
H: 0.2M X W: 1M



ACACIA WANYU
SILVER-LEAF MULGA
H: 1.5-5M X W: 5M



CYBOPOGON AMBIGUOUS
AUSTRALIAN LEMON SCENTED GRASS
H: 0.7M X W: 1M



ENCHYLAENA TOMENTOSA
RUBY SALTBUSH
H: 0.4-1M X W: 0.4-1M



EREMOPHILA PTEROCARPA
EMU BUSH
H: 2M X W: 2M



HALGANIA SP.
H: 0.7M X W: 1.2M



PIMELEA AMMOCHARIS
RICE FLOWER
H: 0.2-1.8M X W: 1M



SCAEVOLA BROWNIANA
H: 1M X W: 1M



TRIODIA EPACTIA
SOFT SPINFEX
H: 0.45-2M X W: 1M



TRIODIA INTERMEDIA
HARD SPINFEX
H: 0.45-2M X W: 1M

NOTE:
• ALL PLANTS SUBJECT OF TOWN OF PORT HEDLAND PREFERRED PLANTING GUIDE

2.9 TR01 - ENTRANCE TREE PLANTING



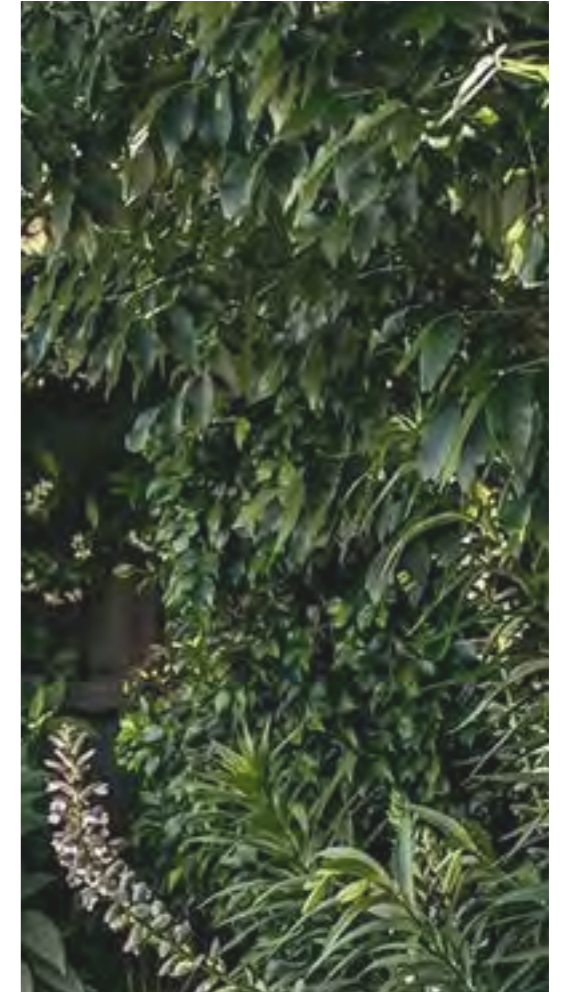
ACACIA PRUINOCARPA
BLACK GIDGEE
H: 12M X W: 3M



JACARANDA MIMOSIFOLIA
JACARANDA
H: 20M X W: 5M



TABEUIA ROSEA ALBA
PINK TRUMPET
H: 30M X W: 5M



INDICATIVE IMAGES ONLY

- NOTE:**
- ALL TREES SUBJECT OF TOWN OF PORT HEDLAND PREFERRED PLANTING GUIDE
 - TREES MUST BE CLEAR OF BRANCHES BETWEEN 750MM AND 2500MM ABOVE GROUND LEVEL TO MAINTAIN SIGHTLINES
 - TREES DISPLAYED ARE POTENTIAL OPTIONS FOR ENTRANCE TREES

2.10 TR02 - BOUNDARY TREE PLANTING



ACACIA CITRINOVIRDIS
WANTAN
H: 10M X W: 5M



ACACIA CORIACEA
RIVER JAM
H: 8M X W: 5M



CORYMBIA OPACA
DESERT BLOODWOOD
H: 15M X W: 5M



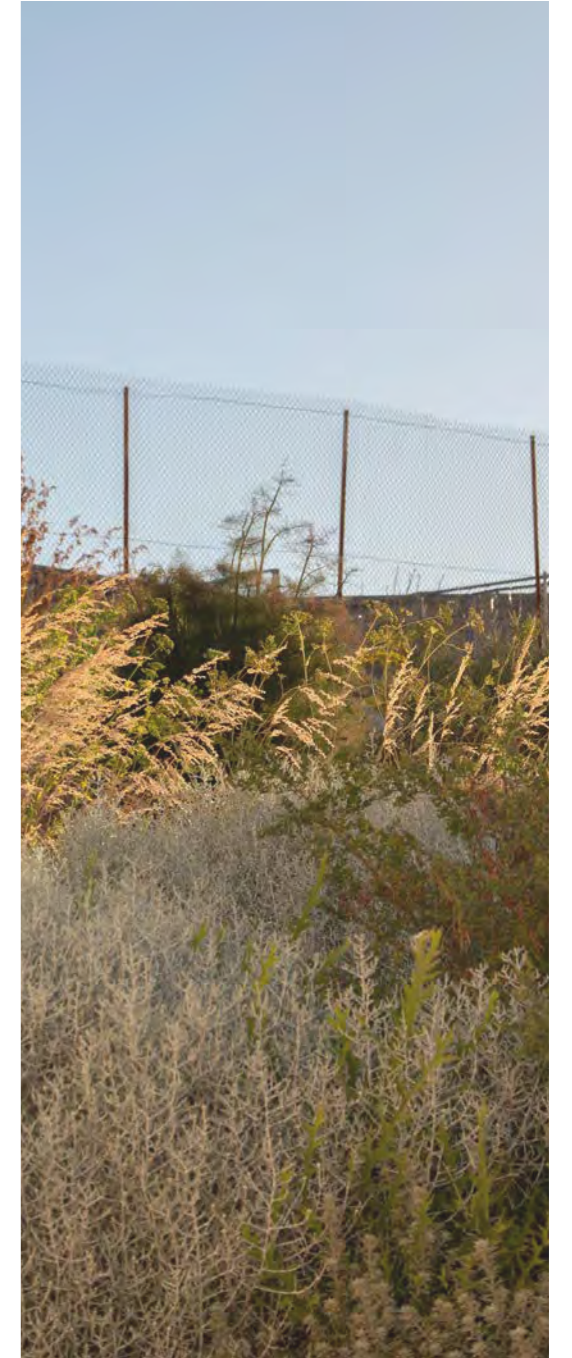
LYSIPHYLLUM CUNNINGHAMII
JIGAL
H: 12M X W: 8M



OWENIA RETICULATA
DESERT WALNUT
H: 10M X W: 2M



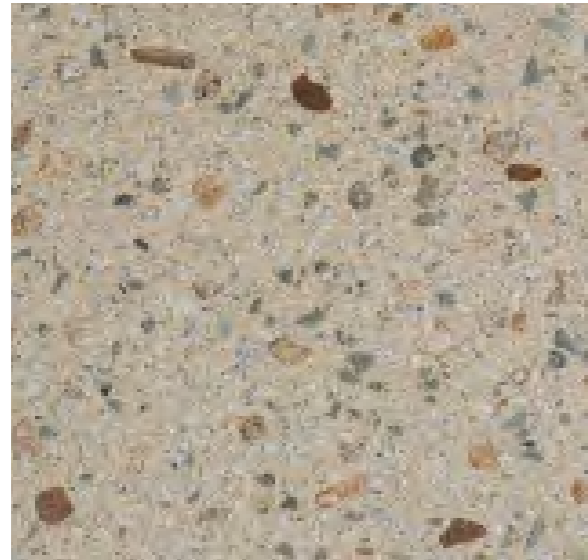
TERMINALIA CANESCENS
JOOLAL
H: 10M X W: 2M



INDICATIVE IMAGES ONLY
NOTE:
• ALL TREES SUBJECT OF TOWN OF PORT HEDLAND PREFERRED PLANTING GUIDE

2.11 GROUND FLOOR - MATERIALS, FURNITURE AND FIXTURES

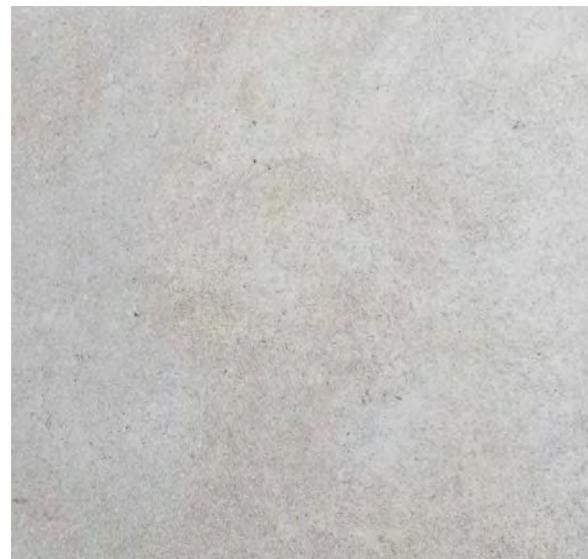
DRAFT



PV01
URBANSTONE ENGINEERED PAVER
1652 SHOT BLAST
600 X 400 MM



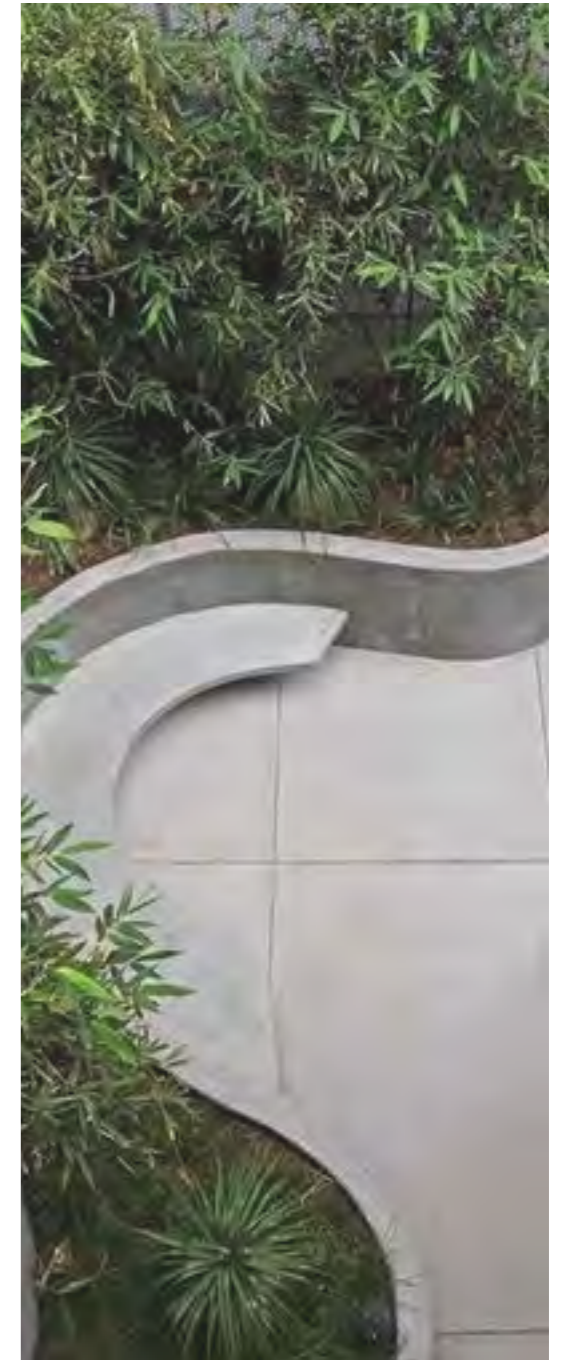
PV02
MIDLAND BRICK PAVERSTONE
PEWTER
230 X 114 MM



FN01 - CUSTOM RAISED GARDEN BED SEATING
IN-SITU CONCRETE
SUPPLIER TBC
450MM (H) X 300MM (W)



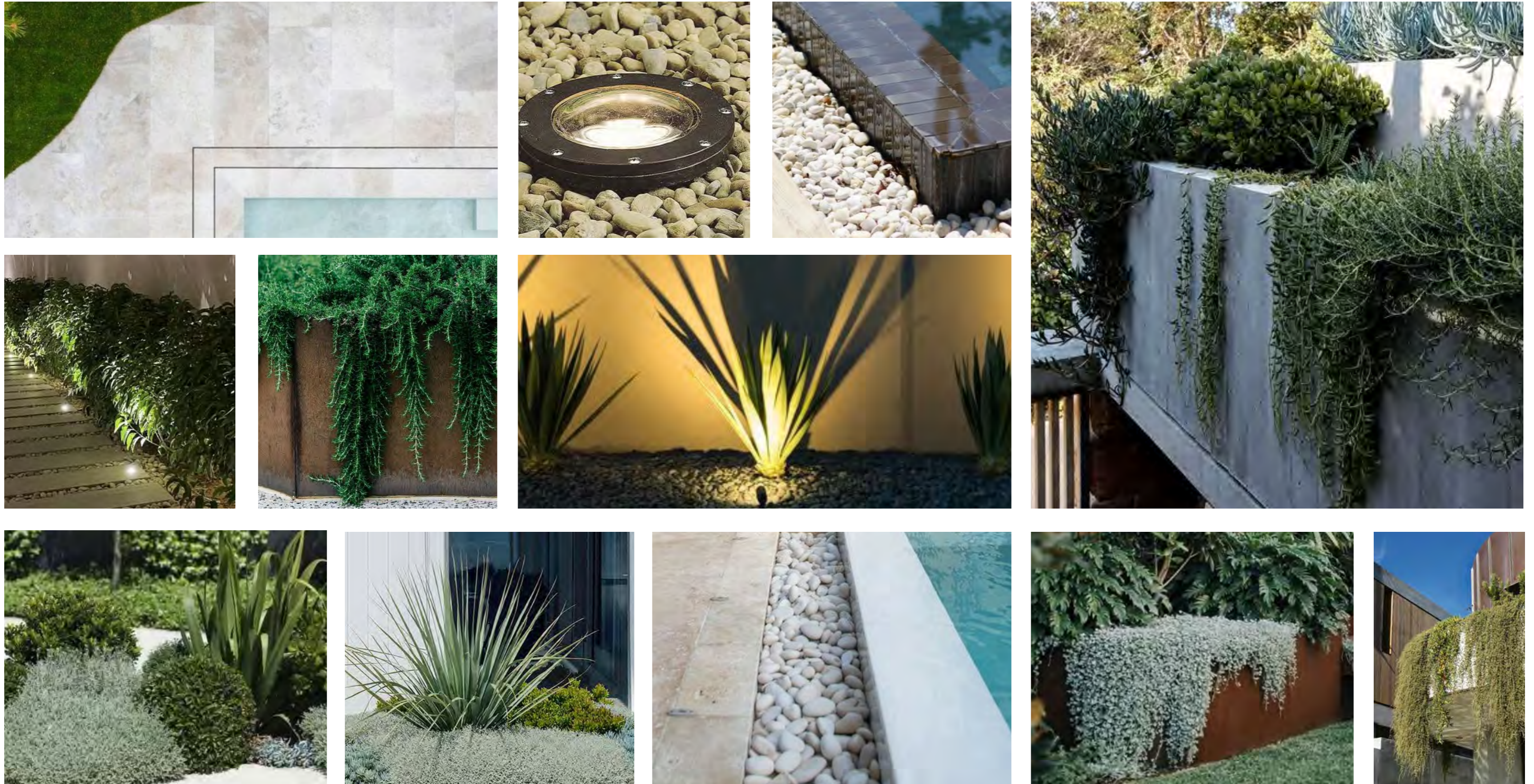
FN02
WE-EF IN GROUND LUMINAIRE
ETC340-FS CC LED
300MM



INDICATIVE IMAGES ONLY

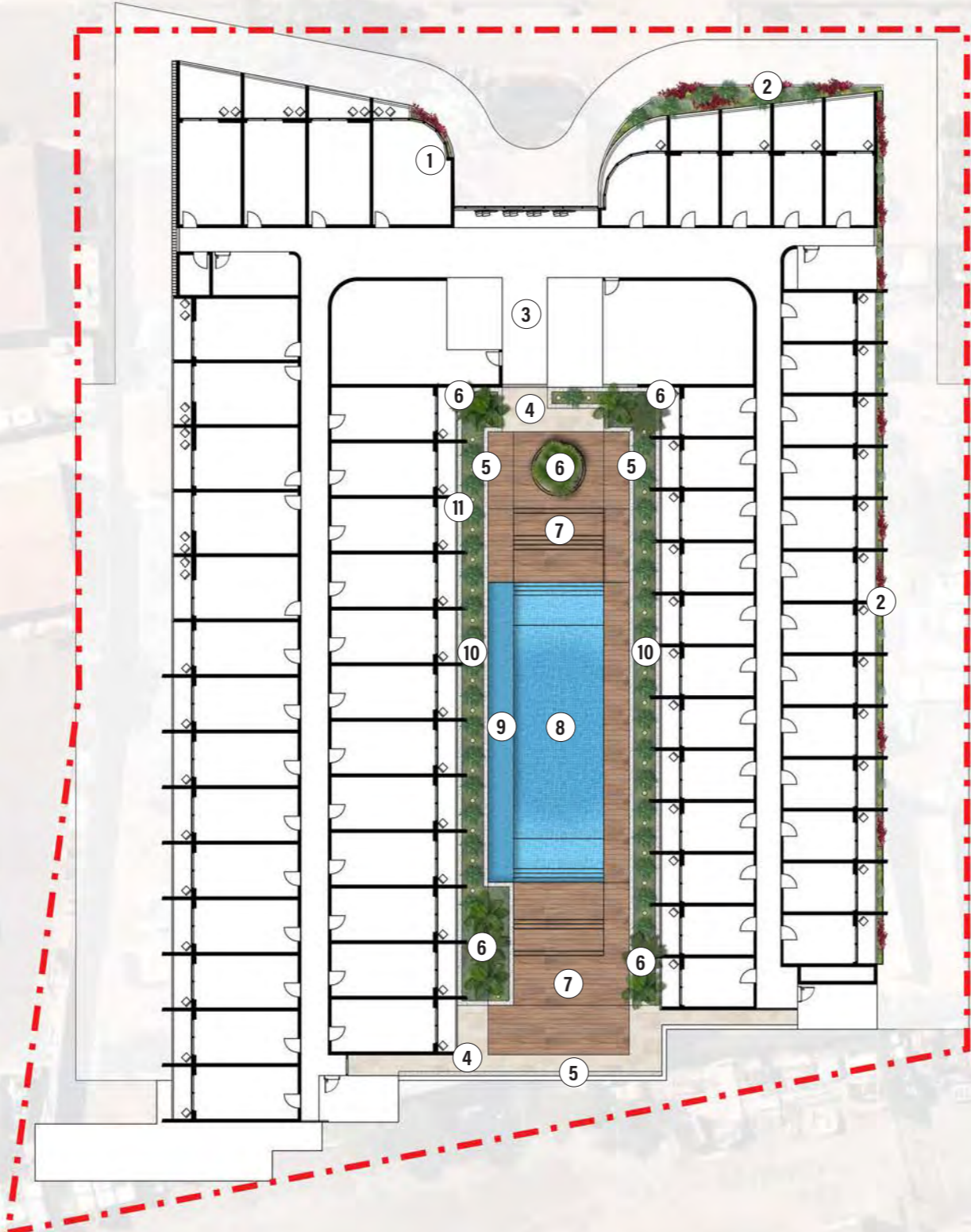
3.0 2ND FLOOR

3.1 2ND FLOOR - INDICATIVE IMAGERY



3.2 2ND FLOOR MASTERPLAN

ANDERSON STREET



KEY

- ① GB04 L2-6 planter box planting
 - ② GB04 L2 planter box planting
 - ③ Lobby
 - ④ PV01A unit paving entrance to pool
 - ⑤ ML01 summerstone gravel pool boarder
 - ⑥ PL01 feature plant
 - ⑦ Pool decking
 - ⑧ Pool
 - ⑨ Pool trough
 - ⑩ FN03 Corten steel planter box (450mm H)
 - ⑪ FN02 in ground feature lighting
- Lot boundary

UDLA

LEVEL 1A, 3-5 JOSEPHSON STREET, FREMANTLE, 6160
08 9336 7577

CLIENT
DMG ARCHITECTS

PROJECT
**PORT HEDLAND ANDERSON ST
CONCEPT**

DRAWING
2ND FLOOR MASTERPLAN

DRAWING NUMBER
LA104

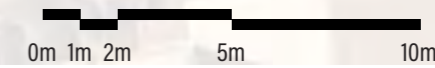
ISSUE DATE
MAY 2023



REVISION
B

SCALE
1:200 @ A3

DRAWN BY
RC



3.3 FLOORS 2-6 ELEVATION



UDLA

LEVEL 1A, 3-5 JOSEPHSON STREET, FREMANTLE, 6160
08 9336 7577

CLIENT
DMG ARCHITECTS

PROJECT
**PORT HEDLAND ANDERSON ST
CONCEPT**

DRAWING
2ND FLOOR GB04 ELEVATION

DRAWING NUMBER
LA105

ISSUE DATE
MAY 2023

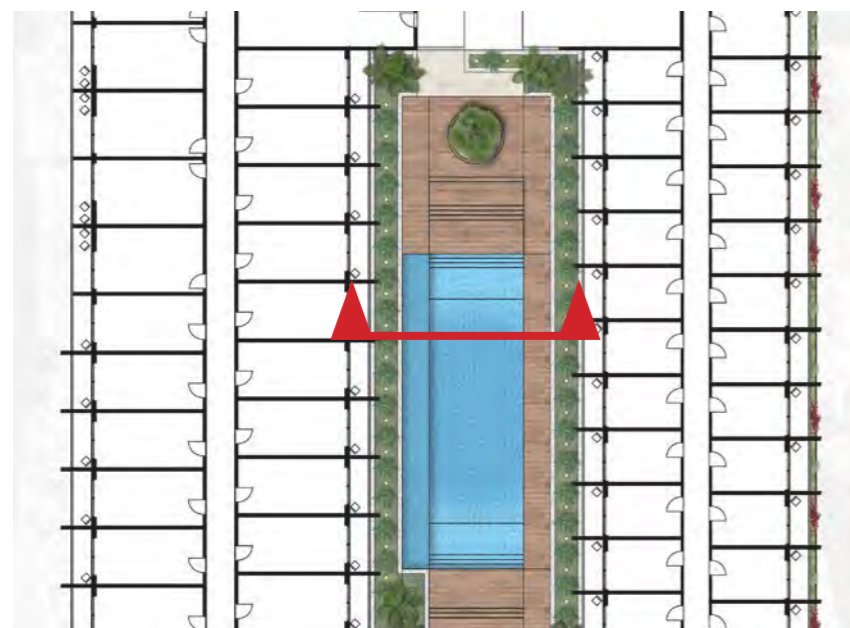
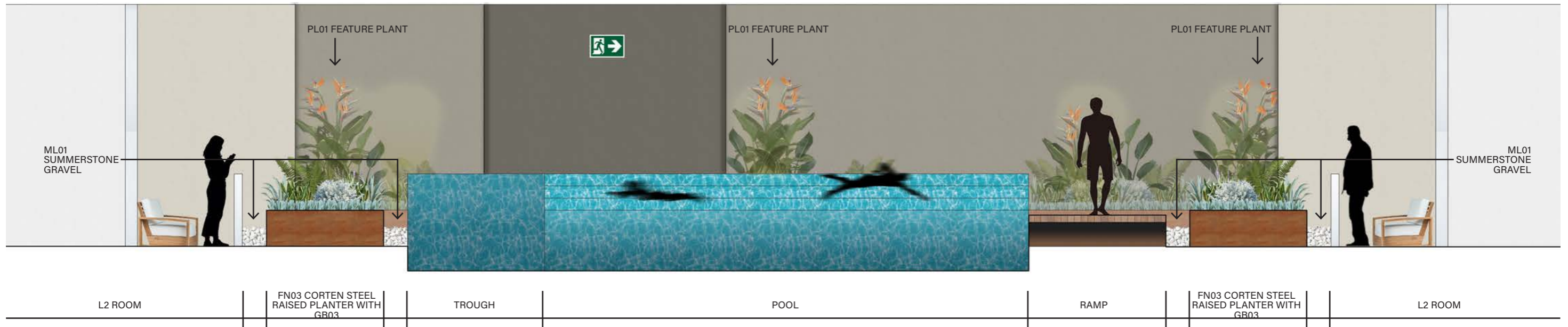
REVISION
B

SCALE
1:100 @ A3

DRAWN BY
RC



3.4 2ND FLOOR POOL SECTION



SECTION CUT

UDLA

LEVEL 1A, 3-5 JOSEPHSON STREET, FREMANTLE, 6160
08 9336 7577

CLIENT
DMG ARCHITECTS

PROJECT
**PORT HEDLAND ANDERSON ST
CONCEPT**

DRAWING
2ND FLOOR POOL SECTION

DRAWING NUMBER
LA106

ISSUE DATE
MAY 2023

REVISION
B

SCALE
1:50 @ A3

DRAWN BY
RC

3.5 GARDEN BED TYPOLOGIES



GB01 - ENTRANCE PLANTING

PLANTING TO SERVE AS AN INTRODUCTION TO THE HOTEL. MIXTURE OF NATIVE AND EXOTIC PLANTS WHICH HIGHLIGHT AND COMPLIMENT THE SURROUNDING PILBARA LANDSCAPE.



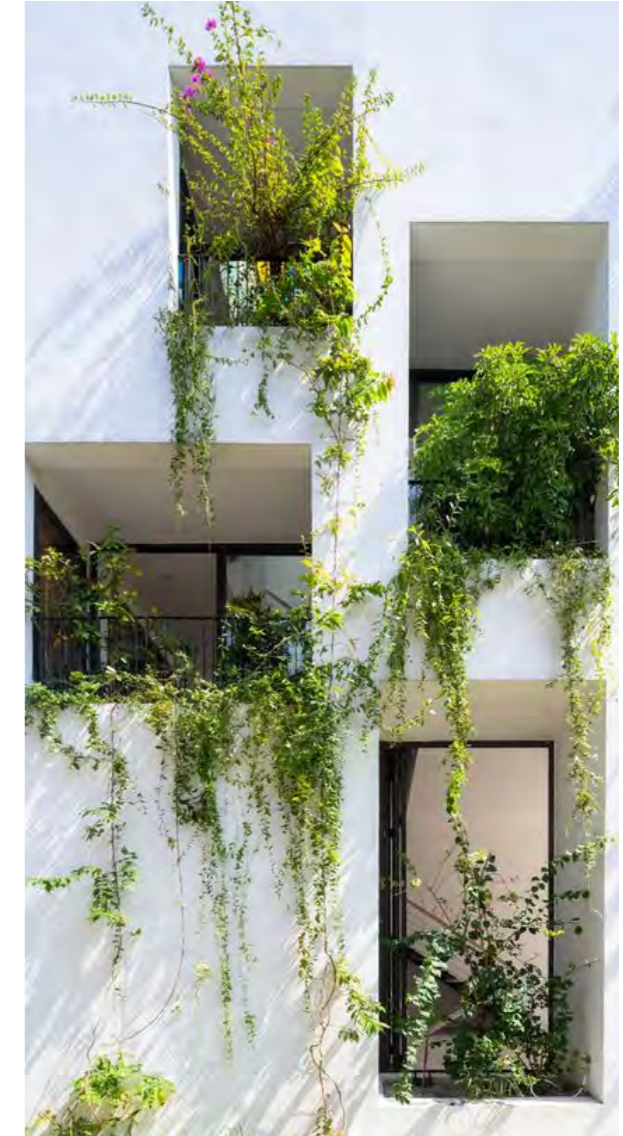
GB02 - BOUNDARY PLANTING

PLANTING AREAS LOCATED AT REAR BOUNDARY TO PROVIDE A BARRIER BETWEEN HOTEL AND ADJOINING LOTS. NATIVE PLANTING WILL ENSURE SPECIES THRIVE.



GB03 - POOL PLANTING

MIXTURE OF NATIVE AND EXOTIC PLANTING WITH COOL TONES AND SOFT FEATURES TO INDUCE A CALMING AND RELAXING ATMOSPHERE FOR GUESTS USING THE POOL SERVICES.



GB04 - PLANTER PLANTING

PLANTERS WILL ACT AS A FOCAL POINT OF HOTEL WHICH WILL INCLUDE A VARIETY OF PLANTS. NATIVE PLANTS WILL CORRELATE WITH ENTRANCE PLANTING WHILST CLIMBING/CREEPING PLANTS WILL AESTHETICALLY COMPLIMENT HOTEL FRONTAGE.

3.6 GB03 - POOL PLANTING

MIXTURE OF NATIVE AND EXOTIC PLANTING WITH COOL TONES AND SOFT FEATURES TO INDUCE A CALMING AND RELAXING ATMOSPHERE FOR GUESTS USING THE POOL SERVICES.



AGAVE AMERICANA 'MEDIOPICTA ALBA'
VARIGATED AGAVE
H: 0.9-1.2M X W: 1-2M



BLECHNUM BIBBUM
SILVER LADY FERN
H: 0.9M X W: 0.3M



CYBMOGON AMBIGUOUS
AUSTRALIAN LEMON SCENTED GRASS
H: 0.7M X W: 1M



DICHONDRA ARGENTEA
SILVER FALLS
H: 0.2M X W: 1.5M



DRACAENA TRIFASCIATA
MOTHER IN LAWS TONGUE
H: 0.7-0.9M X W: 0.2M



EREMOPHILA MACDONNELLII
MACDONNELL'S DESERT FUCHSIA
H: 0.3-1.2M X W: 0.2-1.5M



HIBBERTIA SCANDENS
SNAKE VINE
H: 0.3M X W: 2M



IPOMOEA BRASILIENSIS
BEACH MORNING GLORY
H: 0.2M X W: 3M



LIRIOPE MUSCARI
EVERGREEN GIANT
H: 0.3M X W: 0.5M



MYOPORUM PARVIFOLIUM
CREeping BOOBIALLA
H: 0.3M X W: 3M



PHILODENDRON 'XANADU'
PHILODENDRON
H: 0.75-1M X W: 1M



PTILOTUS CALOSTACHYUS
MUELL
H: 1M X W: 2M



PTILOTUS ROTUNDFOLIUS
ROYAL MULLA MULLA
H: 0.6-2M X W: 1-2M



SENECIO MANDRALISCAE
BLUE CHALK STICKS
H: 0.3M X W: 1-3M

NOTE:
• ALL PLANTS SUBJECT OF TOWN OF PORT HEDLAND PREFERRED PLANTING GUIDE

3.7 PL01 - FEATURE PLANTING

ADDITIONAL LARGER SHRUBS TO ASSIST GB03 POOL PLANTING AS A FOCAL POINT.



STRELITZIA REGINAE
BIRD OF PARADISE
H: 2M X W: 1M



TECOMA X SMITHII
ORANGE BELLS
H: 3M X W: 3M



VITEX TRIFOLIA
COASTAL VITEX
H: 5M X W: 2M

NOTE:
• ALL PLANTS SUBJECT OF TOWN OF PORT
HEDLAND PREFERRED PLANTING GUIDE

3.8 GB04 - PLANTER BOX PLANTING

PLANTERS WILL ACT AS A FOCAL POINT OF HOTEL WHICH WILL INCLUDE A VARIETY OF PLANTS. NATIVE PLANTS WILL CORRELATE WITH ENTRANCE PLANTING WHILST CLIMBING/CREEPING PLANTS WILL AESTHETICALLY COMPLIMENT HOTEL FRONTAGE.



BOUGAINVILLEA GLABRA
BOUGAINVILLEA
H: 3M X W: 5M



DICHONDRA ARGENTEA
SILVER FALLS
H: 0.2M X W: 1.5M



DRACAENA TRIFASCIATA
MOTHER IN LAWS TONGUE
H: 0.7-0.9M X W: 0.2M



EREMOPHILA GLABRA
EMU BUSH
H: 1-3M X W: 1-2M



EREMOPHILA MACDONNELLII
MACDONNELL'S DESERT FUCHSIA
H: 0.3-1.2M X W: 0.2-1.5M



EREMOPHILA PTEROCARPA
EMU BUSH
H: 2M X W: 2M



GOMPHRENA CANESCENS
BACHELORS BUTTONS
H: 0.7M X W: 0.3M



IPOMOEA BRASILIENSIS
BEACH MORNING GLORY
H: 0.2M X W: 3M



MYOPORUM PARVIFOLIUM
CREEPING BOOBIALLA
H: 0.3M X W: 3M



PHILODENDRON 'XANADU'
PHILODENDRON
H: 0.75-1M X W: 1M



PTILOTUS CALOSTACHYUS
MUELL
H: 1M X W: 2M



SWAINSONA FORMOSA
STURTS DESERT PEA
H: 0.5-0.75M X W: 1-3M



SENECIO BARBETIONICUS
SUCCULENT BUSH SENECIO
H: 0.3-1.8M X W: 1-3M

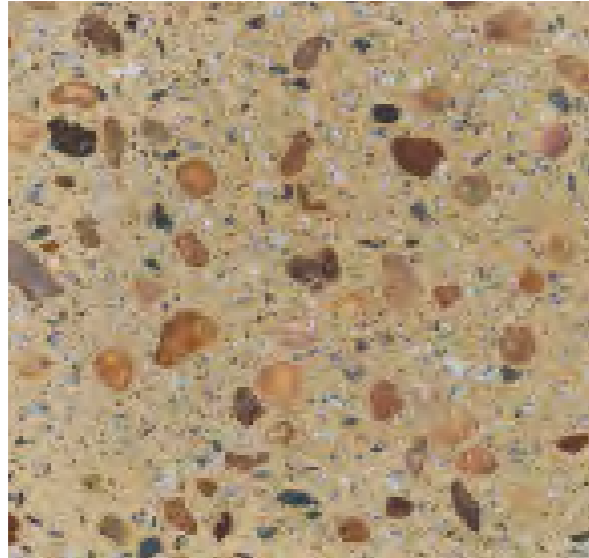


SENECIO MANDRALISCAE
BLUE CHALK STICKS
H: 0.3M X W: 1-3M

NOTE:
• ALL PLANTS SUBJECT OF TOWN OF PORT HEDLAND PREFERRED PLANTING GUIDE

3.9 2ND FLOOR - MATERIALS, FURNITURE AND FIXTURES

DRAFT



PV01A
URBANSTONE ENGINEERED PAVER
1652 HONED
600 X 400 MM



ML01
CREATION LANDSCAPE SUPPLIES
SUMMERSTONE GRAVEL
RANGE OF SIZING



FN03
CORTEN STEEL PLANTER BED
SUPPLIER TBC



FN02
WE-EF IN GROUND LUMINAIRE
ETC340-FS CC LED
300MM



INDICATIVE IMAGES ONLY

UDLA

LEVEL 1A, 3-5 JOSEPHSON STREET
FREMANTLE, 6160 WA
HELLO@UDLA.COM.AU | (08) 9336 7577